

Activity ID	Activity Name	Rem Dur	Start	Finish	Total Float	2016																	
						September					October				November								
						21	28	04	11	18	25	02	09	16	23	30	06	13	20				
3MRP - Aug 2016 to Nov 2016						139	20-Jun-15 A	03-Feb-17	500														
02 - PRE-CONSTRUCTION WORKS						139	20-Jun-15 A	03-Feb-17	220														
02.3 - Method Statement / Shop Drawings						76	20-Jun-15 A	03-Nov-16	358														
0230-1380	MS Landscape Deck Structure - Submission	11	20-Jun-15 A	31-Aug-16	261	MS Landscape Deck Structure - Submission																	
0230-1390	MS Landscape Deck Structure - ER Review & Comment	28	31-Aug-16	28-Sep-16	261	MS Landscape Deck Structure - ER Review & Comment																	
0230-1400	MS Landscape Deck Structure - Resubmission	28	28-Sep-16	26-Oct-16	261	MS Landscape Deck Structure - Resubmission																	
0240-1230	HGHK Carpark - Application for BD Consent (BA8)	0	21-Jun-16 A	16-Aug-16 A		HK Carpark - Application for BD Consent (BA8)																	
0240-1240	HGHK Carpark - BD Consent Received	0		16-Aug-16 A		HK Carpark - BD Consent Received																	
0240-1241	HGHK Carpark - Resubmit ammended Design as Req'd by HGHK to change 900H to 2400H boundary wall at Phase II (by AECOM)	12	25-Aug-16*	05-Sep-16	0	HGHK Carpark - Resubmit ammended Design as Req'd by HGHK to change 900H to 2400H boundary wall at Phase II (by AECOM)																	
0240-1250	HGHK Carpark - Commencement Notification to BD (BA10)(A&A Works)	12	17-Aug-16 A	31-Aug-16	36	HGHK Carpark - Commencement Notification to BD (BA10)(A&A Works)																	
0240-1270	Landscaping Design - Submission	20	20-Apr-16 A	08-Sep-16	358	Landscaping Design - Submission																	
0240-1280	Landscaping Design - ER Review/Resubmission	28	09-Sep-16	06-Oct-16	358	Landscaping Design - ER Review/Resubmission																	
0240-1290	Landscaping Design - ER Approval	28	07-Oct-16	03-Nov-16	358	Landscaping Design - ER Approval																	
0240-1298	Green Roof Minimum 2 years Establishment - Start	0	14-Sep-16		-6	◆ Green Roof Minimum 2 years Establishment - Start																	
0240-2460	MS for for trial erection of green roof - Resubmission	10	04-Apr-16 A	29-Aug-16	-6	MS for for trial erection of green roof - Resubmission																	
0240-2470	MS for for trial erection of green roof - No Adverse Comment	15	30-Aug-16	13-Sep-16	-6	MS for for trial erection of green roof - No Adverse Comment																	
A2050	MS for Dismantling of LG-A at Pier 44-46 - Submission	0	25-Jul-16 A	29-Jul-16 A		MS for Dismantling of LG-A at Pier 44-46 - Submission																	
A2060	MS for Dismantling of LG-A at Pier 44-46 - ER Review / Comment	6	20-Aug-16	25-Aug-16	6	MS for Dismantling of LG-A at Pier 44-46 - ER Review / Comment																	
A2070	MS for Dismantling of LG-A at Pier 44-46 - Resubmission	6	26-Aug-16	31-Aug-16	6	MS for Dismantling of LG-A at Pier 44-46 - Resubmission																	
A2080	MS for Dismantling of LG-A at Pier 44-46 - No Adverse Comment	6	01-Sep-16	06-Sep-16	6	MS for Dismantling of LG-A at Pier 44-46 - No Adverse Comment																	
A2090	MS for Demolition Eastbound Bridge - Submission	6	15-Sep-16*	20-Sep-16	9	MS for Demolition Eastbound Bridge - Submission																	
A2100	MS for Demolition Eastbound Bridge - ER Review / Comment	6	21-Sep-16	26-Sep-16	9	MS for Demolition Eastbound Bridge - ER Review / Comment																	
A2110	MS for Demolition Eastbound Bridge - Resubmission	6	27-Sep-16	02-Oct-16	9	MS for Demolition Eastbound Bridge - Resubmission																	
A2120	MS for Demolition Eastbound Bridge - No Adverse Comment	6	03-Oct-16	08-Oct-16	9	MS for Demolition Eastbound Bridge - No Adverse Comment																	
02.5 - Bridge Segment/Beam Off-site Precasting						132	29-Aug-16	03-Feb-17	151														
0250-3940	Bridge F2B - Pier F3B2 Segment - 5 nos. (S2)	16	01-Nov-16	18-Nov-16	21	Bridge F2B - Pier F3B2 Segment - 5 nos. (S2)																	
0250-3940.1	Bridge F2B - Pier F3B2 Segment - 5 nos. (Delivery to Site)	5	19-Nov-16	24-Nov-16	104	Bridge F2B - Pier F3B2 Segment - 5 nos. (Delivery to Site)																	
0250-4000	Bridge F3B - Pier F5B Segment - 6 nos. (S2)	19	23-Sep-16	17-Oct-16	3	Bridge F3B - Pier F5B Segment - 6 nos. (S2)																	
0250-4000.1	Bridge F3B - Pier F5B Segment - 6 nos. (Delivery to Site)	6	18-Oct-16	24-Oct-16	97	Bridge F3B - Pier F5B Segment - 6 nos. (Delivery to Site)																	
0250-4020	Bridge F3B - Pier F6B Segment - 13 nos. (S2)	32	25-Oct-16	30-Nov-16	3	Bridge F3B - Pier F6B Segment - 13 nos. (S2)																	
0250-4020.1	Bridge F3B - Pier F6B Segment - 13 nos. (Delivery to Site)	10	01-Dec-16	12-Dec-16	45	Bridge F3B - Pier F6B Segment - 13 nos. (Delivery to Site)																	
0250-4070	Bridge F1B1 - Abut D12 Segment - 5 nos. (T)	18	29-Aug-16*	19-Sep-16	3	Bridge F1B1 - Abut D12 Segment - 5 nos. (T)																	
0250-4070.1	Bridge F1B1 - Abut D12 Segment - 5 nos. (Delivery to Site)	5	27-Jan-17	03-Feb-17	151	Bridge F1B1 - Abut D12 Segment - 5 nos. (Delivery to Site)																	
0250-4080	Bridge F1B1 - Pier F1B1 Segment - 13 nos. (T)	32	20-Sep-16	28-Oct-16	3	Bridge F1B1 - Pier F1B1 Segment - 13 nos. (T)																	
0250-4080.1	Bridge F1B1 - Pier F1B1 Segment - 13 nos. (Delivery to Site)	10	16-Jan-17	26-Jan-17	142	Bridge F1B1 - Pier F1B1 Segment - 13 nos. (Delivery to Site)																	
0250-4090	Bridge F1B1 - Pier F2B1 Segment - 11 nos. (T)	28	29-Oct-16	30-Nov-16	142	Bridge F1B1 - Pier F2B1 Segment - 11 nos. (T)																	
0250-4090.1	Bridge F1B1 - Pier F2B1 Segment - 11 nos. (Delivery to Site)	10	04-Jan-17	14-Jan-17	142	Bridge F1B1 - Pier F2B1 Segment - 11 nos. (Delivery to Site)																	
05 - SECTION 2 & 2A OF THE WORKS						90	12-May-16 A	06-Dec-16	-210														

- █ Remaining Level of Effort ◆ ◆ Milestone
- █ Actual Level of Effort
- █ Actual Work
- █ Remaining Work
- █ Critical Remaining Work

Contract HY/2009/19
Three Months Rolling Programme (20 Aug to 19 Nov 2016)

Activity ID	Activity Name	Rem Dur	Start	Finish	Total Float	2016															
						September					October				November						
						21	28	04	11	18	25	02	09	16	23	30	06	13	20		
05.1 - Cut & Cover Tunnel Ch 4855-4932 (APS Footprint)						90	12-May-16 A	06-Dec-16	-210												
05.1.6 - EVB Sub-structure & Tunnel						90	12-May-16 A	06-Dec-16	-210												
05.1.6 - EVB Outstanding Works						90	12-May-16 A	06-Dec-16	-211												
0515-3099	Complete EVB Outstanding Works	0		06-Dec-16*	-211																
0710-0900	Water proofing system (external) - Stage 1	5	12-May-16 A	25-Aug-16	-211	Water proofing system (external) - Stage 1															
0710-1000	Backfill (N46-64/S48-67) for East Vent Bldg - Stage 1	35	27-Jun-16 A	30-Sep-16	-211	Backfill (N46-64/S48-67) for East Vent Bldg - Stage 1															
A1960	Reinstate the temporary opening	35	20-Aug-16	30-Sep-16	-156	Reinstate the temporary opening															
A1961	Water proofing system (external) - Stage 2	7	03-Oct-16	11-Oct-16	-211	Water proofing system (external) - Stage 2															
A1962	Backfill (N46-64/S48-67) for East Vent Bldg - Stage 2	43	12-Oct-16	30-Nov-16	-211																
A1963	Concrete paving / Finishing surface	5	01-Dec-16	06-Dec-16	-211																
A1980	Remove of temporary sheet pile cover	30	26-Aug-16	30-Sep-16	-156	Remove of temporary sheet pile cover															
A1990	Water proofing system (internal)	35	05-Aug-16 A	30-Sep-16	-156	Water proofing system (internal)															
05.1.7 - EVB & Tunnel Remedial Works						35	05-Aug-16 A	30-Sep-16	-155												
A2030	Tunnel - Pump Sump E > Rectification of Reserve Pipe & Gen Cleaning Works	10	20-Aug-16	31-Aug-16	-131	Tunnel - Pump Sump E > Rectification of Reserve Pipe & Gen Cleaning Works															
A2040	Tunnel - OHVD (Eastern Side) > Rectification of Water Seepage	23	20-Aug-16	15-Sep-16	-156	Tunnel - OHVD (Eastern Side) > Rectification of Water Seepage															
A2250	Tunnel - OHVD (Western Side) > Rectification of Structural Concrete Defect	15	31-Aug-16	17-Sep-16	-144	Tunnel - OHVD (Western Side) > Rectification of Structural Concrete Defect															
A2260	Tunnel - OHVD (Western Side) > Rectification of Water Seepage	12	17-Sep-16	30-Sep-16	-156	Tunnel - OHVD (Western Side) > Rectification of Water Seepage															
A2270	Tunnel - APS > Rectification of Structural Concrete Defect & Gen Cleaning Works	14	31-Aug-16	15-Sep-16	-144	Tunnel - APS > Rectification of Structural Concrete Defect & Gen Cleaning Works															
A2280	EVB - Rectification of Structural Defects at Stairs 03	10	05-Aug-16 A	31-Aug-16	-156	EVB - Rectification of Structural Defects at Stairs 03															
A2290	EVB - Rectification of Structural Defects at Stairs 01	9	01-Sep-16	10-Sep-16	-156	EVB - Rectification of Structural Defects at Stairs 01															
A2300	EVB - Rectification of Structural Defects at Stairs 02	16	12-Sep-16	30-Sep-16	-156	EVB - Rectification of Structural Defects at Stairs 02															
A2310	EVB - (Western Side) > Rectification of Structural Concrete Defect & Gen Cleaning Works	10	20-Aug-16	31-Aug-16	-156	EVB - (Western Side) > Rectification of Structural Concrete Defect & Gen Cleaning Works															
A2320	EVB - (Eastern Side) > Rectification of Structural Concrete Defect & Gen Cleaning Works	25	01-Sep-16	30-Sep-16	-156	EVB - (Eastern Side) > Rectification of Structural Concrete Defect & Gen Cleaning Works															
A2330	EVB - Rectification of Defects to Water Tanks	10	20-Aug-16	31-Aug-16	-131	EVB - Rectification of Defects to Water Tanks															
09 - SECTION 6 OF THE WORKS						50	07-Sep-16	08-Nov-16	42												
09.1 - Carparks for Harbour Grand Hong Kong						50	07-Sep-16	08-Nov-16	42												
0910-1003	HGHK Carpark Work Commenced	0		07-Sep-16	28	◆ HGHK Carpark Work Commenced															
0910-1007	Demo > Gen Clearance, Plant/Tile/Slab Removal (Part 1)	7	08-Sep-16	15-Sep-16	28	Demo > Gen Clearance, Plant/Tile/Slab Removal (Part 1)															
0910-1007.1	Drainage Construction	10	17-Sep-16	28-Sep-16	42	Drainage Construction															
0910-1007.2	E&M Manhole Const. and Waterpipe Installations	5	29-Sep-16	05-Oct-16	42	E&M Manhole Const. and Waterpipe Installations															
0910-1007.3	3000H Feature Wall (RC)	10	06-Oct-16	18-Oct-16	42	3000H Feature Wall (RC)															
0910-1007.4	900H Boundary Wall (RC)	8	06-Oct-16	15-Oct-16	42	900H Boundary Wall (RC)															
0910-1007.5	Planter Box (RC)	10	06-Oct-16	18-Oct-16	42	Planter Box (RC)															
0910-1010	Carpark Base Slab Works (Partial - Portion IVB)	18	19-Oct-16	08-Nov-16	42	Carpark Base Slab Works															
0910-1050	Demo > Gen Clearance, Plant/Tile/Slab Removal (Part II)	9	03-Oct-16	13-Oct-16	28	Demo > Gen Clearance, Plant/Tile/Slab Removal (Part II)															
10 - SECTION X OF THE WORKS						78	20-Jun-16 A	22-Nov-16	561												
10.2 - WB Bridges (Bridge C and F)						71	20-Jun-16 A	14-Nov-16	311												
10.2.1 - Tie Beam & Pile Caps Extension						40	08-Jul-16 A	07-Oct-16	292												
1021-2300	Pier 26 > Pile Cap Ext. - Excavation & ELS Works	0	08-Aug-16 A	17-Aug-16 A		Pier 26 > Pile Cap Ext. - Excavation & ELS Works															

- █ Remaining Level of Effort ◆ ◆ Milestone
- █ Actual Level of Effort
- █ Actual Work
- █ Remaining Work
- █ Critical Remaining Work

Contract HY/2009/19
Three Months Rolling Programme (20 Aug to 19 Nov 2016)

Activity ID	Activity Name	Rem Dur	Start	Finish	Total Float	2016											
						September					October				November		
						21	28	04	11	18	25	02	09	16	23	30	06
1021-2320	Pier 26 > Pile Cap Ext. - Post Drilling & Rebar Fixing Works	11	18-Aug-16 A	01-Sep-16	14	Pier 26 > Pile Cap Ext. - Post Drilling & Rebar Fixing Works											
1021-2330	Pier 26 > Pile Cap Ext. - Formworks & Concreting Works	6	02-Sep-16	08-Sep-16	14	Pier 26 > Pile Cap Ext. - Formworks & Concreting Works											
1021-2340	Pier 26 > Pile Cap Ext. - Remove Fwk & Backfilling	4	09-Sep-16	13-Sep-16	14	Pier 26 > Pile Cap Ext. - Remove Fwk & Backfilling											
1021-2360	Pier 26 > Tie Beam. - Post Drilling & Rebar Fixing Works	0	16-Jul-16 A	30-Jul-16 A		Pier 26 > Tie Beam. - Post Drilling & Rebar Fixing Works											
1021-2370	Pier 26 > Tie Beam. - Formworks & Concreting Works	0	28-Jul-16 A	10-Aug-16 A		Pier 26 > Tie Beam. - Formworks & Concreting Works											
1021-2380	Pier 26 > Tie Beam. - Remove Fwk & Backfilling	7	11-Aug-16 A	27-Aug-16	14	Pier 26 > Tie Beam. - Remove Fwk & Backfilling											
1021-2420	Pier 27 > Tie Beam. - Remove Fwk & Backfilling	0	21-Jul-16 A	12-Aug-16 A		Pier 27 > Tie Beam. - Remove Fwk & Backfilling											
1021-2430	Pier 28 > Tie Beam - Excavation & ELS Works	0	08-Jul-16 A	21-Jul-16 A		Pier 28 > Tie Beam - Excavation & ELS Works											
1021-2440	Pier 28 > Tie Beam. - Post Drilling & Rebar Fixing Works	0	22-Jul-16 A	15-Aug-16 A		Pier 28 > Tie Beam. - Post Drilling & Rebar Fixing Works											
1021-2450	Pier 28 > Tie Beam. - Formworks & Concreting Works	0	12-Aug-16 A	15-Aug-16 A		Pier 28 > Tie Beam. - Formworks & Concreting Works											
1021-2460	Pier 28 > Tie Beam. - Remove Fwk & Backfilling	4	20-Aug-16	24-Aug-16	141	Pier 28 > Tie Beam. - Remove Fwk & Backfilling											
A1920	Pier 28 > Tie Beam - Excavation & ELS Works	0	05-Aug-16 A	09-Aug-16 A		Pier 28 > Tie Beam - Excavation & ELS Works											
A1930	Pier 23 > Tie Beam. - Post Drilling & Rebar Fixing Works	7	10-Aug-16 A	27-Aug-16	301	Pier 23 > Tie Beam. - Post Drilling & Rebar Fixing Works											
A1940	Pier 23 > Tie Beam. - Formworks & Concreting Works	4	29-Aug-16	01-Sep-16	301	Pier 23 > Tie Beam. - Formworks & Concreting Works											
A1950	Pier 23 > Tie Beam. - Remove Fwk & Backfilling	4	22-Sep-16	26-Sep-16	301	Pier 23 > Tie Beam. - Remove Fwk & Backfilling											
A2130	Pier 25 > Tie Beam - Excavation & ELS Works	5	13-Sep-16	19-Sep-16	18	Pier 25 > Tie Beam - Excavation & ELS Works											
A2140	Pier 25 > Tie Beam. - Post Drilling & Rebar Fixing Works	7	20-Sep-16	27-Sep-16	18	Pier 25 > Tie Beam. - Post Drilling & Rebar Fixing Works											
A2150	Pier 25 > Tie Beam. - Formworks & Concreting Works	4	28-Sep-16	03-Oct-16	18	Pier 25 > Tie Beam. - Formworks & Concreting Works											
A2160	Pier 25 > Tie Beam. - Remove Fwk & Backfilling	4	04-Oct-16	07-Oct-16	18	Pier 25 > Tie Beam. - Remove Fwk & Backfilling											
A2170	Pier 22 > Tie Beam - Excavation & ELS Works	5	02-Sep-16	07-Sep-16	301	Pier 22 > Tie Beam - Excavation & ELS Works											
A2180	Pier 22 > Tie Beam. - Post Drilling & Rebar Fixing Works	7	08-Sep-16	15-Sep-16	301	Pier 22 > Tie Beam. - Post Drilling & Rebar Fixing Works											
A2190	Pier 22 > Tie Beam. - Formworks & Concreting Works	4	17-Sep-16	21-Sep-16	301	Pier 22 > Tie Beam. - Formworks & Concreting Works											
A2200	Pier 22 > Tie Beam. - Remove Fwk & Backfilling	4	22-Sep-16	26-Sep-16	301	Pier 22 > Tie Beam. - Remove Fwk & Backfilling											
A2210	Pier 24 > Tie Beam - Excavation & ELS Works	5	17-Aug-16 A	25-Aug-16	18	Pier 24 > Tie Beam - Excavation & ELS Works											
A2220	Pier 24 > Tie Beam. - Post Drilling & Rebar Fixing Works	7	26-Aug-16	02-Sep-16	18	Pier 24 > Tie Beam. - Post Drilling & Rebar Fixing Works											
A2230	Pier 24 > Tie Beam. - Formworks & Concreting Works	4	03-Sep-16	07-Sep-16	18	Pier 24 > Tie Beam. - Formworks & Concreting Works											
A2240	Pier 24 > Tie Beam. - Remove Fwk & Backfilling	4	08-Sep-16	12-Sep-16	18	Pier 24 > Tie Beam. - Remove Fwk & Backfilling											
10.2.3 - Bridge Construction		71	20-Jun-16 A	14-Nov-16	311												
Bridge C1		55	20-Jun-16 A	26-Oct-16	32												
1022-1003.3	Bridge C1 - Construct South Parapet Pier 17-21 W/B - Rebar & Cast-in Fixing	9	27-Jul-16 A	30-Aug-16	-4	Bridge C1 - Construct South Parapet Pier 17-21 W/B - Rebar & Cast-in Fixing											
1022-1003.4	Bridge C1 - Construct South Parapet Pier 17-21 W/B - Shutter Installation	9	23-Aug-16	01-Sep-16	-4	Bridge C1 - Construct South Parapet Pier 17-21 W/B - Shutter Installation											
1022-1003.5	Bridge C1 - Construct South Parapet Pier 17-21 W/B - Concreting	8	26-Aug-16	03-Sep-16	-4	Bridge C1 - Construct South Parapet Pier 17-21 W/B - Concreting											
1022-1004	Bridge C1 - Construct Int. Single Noise Encl. (South) Pier 17-22 Stage 0 - Base Plate & Main Post	8	05-Sep-16	13-Sep-16	-4	Bridge C1 - Construct Int. Single Noise Encl. (South) Pier 17-22 Stage 0 - Base Plate & Main Post											
1022-1004.2	Bridge C1 - Construct Int. Single Noise Encl. (South) Pier 17-22 Stage 0 - Secondary Frames & Panels (Vertical)	14	14-Sep-16	30-Sep-16	-4	Bridge C1 - Construct Int. Single Noise Encl. (South) Pier 17-22 Stage 0 - Secondary Frames & Panels (Vertical)											
1022-2754	Bridge C1 - Construction (Pier 21- 22)-Part 1 > Construct Parapet (North & South)	0	20-Jun-16 A	15-Aug-16 A		Bridge C1 - Construction (Pier 21- 22)-Part 1 > Construct Parapet (North & South)											
1022-2755	Bridge C1 - Construction (Pier 21-22) > Install Street Furniture/GullyEtc.	14	21-Jun-16 A	05-Sep-16	17	Bridge C1 - Construction (Pier 21-22) > Install Street Furniture/GullyEtc.											
1022-2756	Bridge C1 - Construction (Pier 21-22) > Install MJ at Pier 22	14	20-Aug-16	05-Sep-16	17	Bridge C1 - Construction (Pier 21-22) > Install MJ at Pier 22											
1022-3100	Bridge C1 - Construct North Parapet Pier 19-20 W/B	14	11-Oct-16	26-Oct-16	32	Bridge C1 - Construct North Parapet Pier 19-20 W/B											

Remaining Level of Effort ◆ ◆ Milestone
 Actual Level of Effort
 Actual Work
 Remaining Work
 Critical Remaining Work

Contract HY/2009/19
Three Months Rolling Programme (20 Aug to 19 Nov 2016)

Activity ID	Activity Name	Rem Dur	Start	Finish	Total Float	2016											
						September					October				November		
						21	28	04	11	18	25	02	09	16	23	30	06
1022-3953.1	Bridge C5 - Construct Int. Single Noise Encl. Bridge C5 - Main Frames	3	30-Jun-16 A	23-Aug-16	-14	Bridge C5 - Construct Int. Single Noise Encl. Bridge C5 - Main Frames											
1022-3953.2	Bridge C5 - Construct Int. Single Noise Encl. Bridge C5 - Secondary Frames & Panels	14	05-Aug-16 A	05-Sep-16	-14	Bridge C5 - Construct Int. Single Noise Encl. Bridge C5 - Secondary Frames & Panels											
1022-3954	Bridge C5 - Deck Road Waterproofing, Surfacing & Marking	7	27-Sep-16	05-Oct-16	-4	Bridge C5 - Deck Road Waterproofing, Surfacing & Marking											
Bridge F1C		38	12-Aug-16 A	05-Oct-16	-4												
1022.1-4247	Bridge F1C - Construct Int. Double Noise Encl. Bridge F1C - Base Plate & Main Post	12	12-Aug-16 A	02-Sep-16	2	Bridge F1C - Construct Int. Double Noise Encl. Bridge F1C - Base Plate & Main Post											
1022.1-4248	Bridge F1C - Construct Int. Double Noise Encl. Bridge F1C - Main Frames	14	27-Aug-16	12-Sep-16	2	Bridge F1C - Construct Int. Double Noise Encl. Bridge F1C - Main Frames											
1022.1-4249	Bridge F1C - Construct Int. Double Noise Encl. Bridge F1C - Secondary Frames & Panels	14	02-Sep-16	19-Sep-16	2	Bridge F1C - Construct Int. Double Noise Encl. Bridge F1C - Secondary Frames & Panels											
1022.1-4251	Bridge F1C - Bridge F1C Deck Road Waterproofing, Surfacing & Marking	7	27-Sep-16	05-Oct-16	-4	Bridge F1C - Bridge F1C Deck Road Waterproofing, Surfacing & Marking											
Bridge F2C		38	16-Aug-16 A	05-Oct-16	-4												
1022.1-4363.1	Bridge F2C - Construct Int. Double Noise Encl. (54m) - Base Plate & Main Post	9	29-Aug-16	07-Sep-16	-4	Bridge F2C - Construct Int. Double Noise Encl. (54m) - Base Plate & Main Post											
1022.1-4363.2	Bridge F2C - Construct Int. Double Noise Encl. (54m) - Main Frames	10	05-Sep-16	15-Sep-16	-4	Bridge F2C - Construct Int. Double Noise Encl. (54m) - Main Frames											
1022.1-4363.3	Bridge F2C - Construct Int. Double Noise Encl. (54m) - Secondary Frames & Panels	12	12-Sep-16	26-Sep-16	-4	Bridge F2C - Construct Int. Double Noise Encl. (54m) - Secondary Frames & Panels											
1022.1-4369	Bridge F2C - Deck Road Waterproofing, Surfacing & Marking	7	27-Sep-16	05-Oct-16	-4	Bridge F2C - Deck Road Waterproofing, Surfacing & Marking											
A2360	Pier 38 - MJ	11	16-Aug-16 A	01-Sep-16	16	Pier 38 - MJ											
Bridge F3C		70	22-Aug-16	14-Nov-16	311												
1022.1-4525	Bridge F3C - Construct South Parapet (83m)	13	22-Aug-16	05-Sep-16	-6	Bridge F3C - Construct South Parapet (83m)											
1022.1-4530	Bridge F3C - Construct Int. Double Noise Encl. Bridge F3C (83m) - Stage 1(Install 50% Panel)	24	06-Sep-16	05-Oct-16	-6	Bridge F3C - Construct Int. Double Noise Encl. Bridge F3C (83m) - Stage 1											
1022.1-4531	Bridge F3C - Construct Int. Double Noise Encl. Bridge F3C (83m) - Stage 2(Complete Panel)	30	11-Oct-16	14-Nov-16	311	Bridge F3C - Construct Int. Double Noise Encl. Bridge F3C (83m) - Stage 2											
1022.1-4535	Bridge F3C - Deck Road Waterproofing, Surfacing & Marking	3	06-Oct-16	08-Oct-16	-6	Bridge F3C - Deck Road Waterproofing, Surfacing & Marking											
A2350	Pier 40 - MJ	14	06-Sep-16	22-Sep-16	4	Pier 40 - MJ											
Bridge F5		41	18-Aug-16 A	08-Oct-16	-6												
1022.1-5006	Planking at Bridge F5	1	18-Aug-16 A	20-Aug-16	-6	Planking at Bridge F5											
1022.1-5007	Diaphragm Wall construction at Bridge F Deck	13	19-Aug-16 A	03-Sep-16	-4	Diaphragm Wall construction at Bridge F Deck											
1022.1-5008	Drainage Catchpit construction at Bridge F5	10	25-Aug-16	05-Sep-16	6	Drainage Catchpit construction at Bridge F5											
1022.1-5009	Launch LG-A to Pier 44-46	3	22-Aug-16	24-Aug-16	-6	Launch LG-A to Pier 44-46											
1022.1-5010	Dismantle LG1	22	25-Aug-16	20-Sep-16	-6	Dismantle LG1											
1022.1-5015	Bridge F5 - W/B Construct R.C. Deck	11	25-Aug-16	06-Sep-16	-6	Bridge F5 - W/B Construct R.C. Deck											
1022.1-5016	Construct Side/Wing Slab on hanging platform	11	07-Sep-16	20-Sep-16	-6	Construct Side/Wing Slab on hanging platform											
1022.1-5020	Bridge F5 - W/B Construct Parapet (landside) (24/6m, 2 set @ 3d)	7	21-Sep-16	28-Sep-16	-6	Bridge F5 - W/B Construct Parapet (landside) (24/6m, 2 set @ 3d)											
1022.1-5021	Pier 43 & 44 MJ	5	29-Sep-16	05-Oct-16	-6	Pier 43 & 44 MJ											
1022.1-5025	Bridge F5 - W/B Road Surfacing & Marking	3	06-Oct-16	08-Oct-16	-6	Bridge F5 - W/B Road Surfacing & Marking											
All W/B Bridges (Common)		36	01-Jul-16 A	03-Oct-16	2												
A2445	Delivery of L3 Railings	6	29-Aug-16*	03-Sep-16	1	Delivery of L3 Railings											
A2450	Installation of L3 Railings (Bridge C4 - C5)	14	05-Sep-16	21-Sep-16	1	Installation of L3 Railings (Bridge C4 - C5)											
A2460	Installation of L3 Railings (Bridge F1C - F5)	23	05-Sep-16	03-Oct-16	2	Installation of L3 Railings (Bridge F1C - F5)											
A2470	Installation of L3 Railings (Bridge C3 - C1)	14	12-Sep-16	28-Sep-16	2	Installation of L3 Railings (Bridge C3 - C1)											
A2490	Installation of Watermains and Fire Hydrant at WB Bridge	23	01-Jul-16 A	15-Sep-16	6	Installation of Watermains and Fire Hydrant at WB Bridge											
A2500	Testing of Watermains and Fire Hydrant at WB Bridge	6	17-Sep-16	23-Sep-16	6	Testing of Watermains and Fire Hydrant at WB Bridge											
A2510	Lighting Installation (Bridge C4 - C5)	8	08-Sep-16	17-Sep-16	1	Lighting Installation (Bridge C4 - C5)											

- Remaining Level of Effort ◆ ◆ Milestone
- Actual Level of Effort
- Actual Work
- Remaining Work
- Critical Remaining Work

Contract HY/2009/19
Three Months Rolling Programme (20 Aug to 19 Nov 2016)

Activity ID	Activity Name	Physical % Complete	Original Duration	Start	Finish	Total Float	2016											
							Jan	Feb	Mar	Apr	May	Jun	Jul	Aug	Sep	Oct	Nov	Dec
HY/2009/15 - Works Programme Update 20 April 2016																		
Stage and Section Completion																		
KD_5745	KD10 - Completion of Section 5, (1863d)	100%	0d		25-Mar-16 A		◆ KD10 - Completion of Section 5, (1863d)											
KD_5740	KD9 - Completion of Section 4, (1739d)	0%	0d		22-Jul-16*	-385d	◆ KD9 - Completion of Section 4, (1739d)											
KD_5750	KD11 - Completion of Section 6, (1949d)	0%	0d		30-Aug-16*	-214d	◆ KD11 - Completion of Section 6, (1949d)											
TPCWAW																		
TPCWAW ELS Works - East Section																		
S6_6180	East excavation to formation	100%	85d	18-Sep-15 A	24-Dec-15 A		East excavation to formation											
S5_61070	Demolition of bulkhead wall TPCWAE/TPCWAW	100%	34d	06-Dec-15 A	09-Jan-16 A		Demolition of bulkhead wall TPCWAE/TPCWAW											
TPCWAW- CCT RC Structure, Base Slab																		
S5_60600	Waterproofing + Base slab Bay 1 (incl. removal of 7th layer struts after casting of base slab)	100%	15d	03-Dec-15 A	23-Dec-15 A		Waterproofing + Base slab Bay 1 (incl. removal of 7th layer struts after casting of base slab)											
S5_60620	Waterproofing + Base slab Bay 5	100%	11d	05-Dec-15 A	29-Dec-15 A		Waterproofing + Base slab Bay 5											
S5_60625	Waterproofing + Base slab Bay 6	100%	11d	16-Dec-15 A	19-Jan-16 A		Waterproofing + Base slab Bay 6											
S5_60630	Waterproofing + Base slab Bay 7	100%	7d	07-Jan-16 A	05-Feb-16 A		Waterproofing + Base slab Bay 7											
S5_60635	Waterproofing + Base slab Bay 8	100%	6d	12-Jan-16 A	05-Feb-16 A		Waterproofing + Base slab Bay 8											
S5_61065	Waterproofing + Base slab Bay 9 (stitching with TPCWAE)	100%	6d	15-Jan-16 A	05-Feb-16 A		Waterproofing + Base slab Bay 9 (stitching with TPCWAE)											
TPCWAW- CCT RC Structure, Wall																		
S5_60675	Wall Bay 2 (+ repropping and removal of 5th & 6th struts)	100%	10d	10-Dec-15 A	05-Jan-16 A		Wall Bay 2 (+ repropping and removal of 5th & 6th struts)											
S5_60680	Wall Bay 3 (+ repropping and removal of 5th & 6th struts)	100%	21d	10-Dec-15 A	07-Jan-16 A		Wall Bay 3 (+ repropping and removal of 5th & 6th struts)											
S5_60670	Wall Bay 1 (+ repropping and removal of 5th & 6th struts)	100%	21d	15-Dec-15 A	10-Jan-16 A		Wall Bay 1 (+ repropping and removal of 5th & 6th struts)											
S5_60685	Wall Bay 4 (+ repropping and removal of 5th & 6th struts)	100%	22d	20-Dec-15 A	11-Jan-16 A		Wall Bay 4 (+ repropping and removal of 5th & 6th struts)											
S5_60690	Wall Bay 5 (+ removal of 5th strut)	100%	10d	02-Jan-16 A	29-Jan-16 A		Wall Bay 5 (+ removal of 5th strut)											
S5_60695	Wall Bay 6 (+ removal of 5th strut)	100%	7d	21-Jan-16 A	25-Feb-16 A		Wall Bay 6 (+ removal of 5th strut)											
S5_60700	Wall Bay 7 (+ removal of 5th strut)	100%	8d	16-Feb-16 A	25-Feb-16 A		Wall Bay 7 (+ removal of 5th strut)											
S5_60705	Wall Bay 8 (+ removal of 5th strut)	100%	9d	16-Feb-16 A	25-Feb-16 A		Wall Bay 8 (+ removal of 5th strut)											
S5_61075	Wall Bay 9 (+ removal of 5th strut)	100%	8d	16-Feb-16 A	25-Feb-16 A		Wall Bay 9 (+ removal of 5th strut)											
TPCWAW -Maintenance Walkway																		
S6_9085	TPCWAW - Maintenance walkway / profile barrier	100%	23d	20-Dec-15 A	23-Mar-16 A		TPCWAW - Maintenance walkway / profile barrier											

- Remaining Work
- Actual Work
- Remaining Work
- Critical Remaining Work
- Milestone
- Summary
- Actual Work

1 of 3

China State Construction Engineering (Hong Kong) Ltd.

Contract No. HY/2009/15 - Central Wan Chai By Pass - Tunnel (Causeway Bay Typhoon Shelter Section)

WORKS PROGRAMME UPDATE

Prepared by Quartz Jequinto			
Date	Revision	Checked	Approved
20-Apr-16	Progress Update	WC	WSL
	(based on WP Rev. N-3rd Submission)		

Activity ID	Activity Name	Physical % Complete	Original Duration	Start	Finish	Total Float	2016													
							Jan	Feb	Mar	Apr	May	Jun	Jul	Aug	Sep	Oct	Nov	Dec		
TPCWAW- CCT RC Structure, OHVD																				
S5_60755	OHVD Bay 4	100%	12d	24-Dec-15 A	25-Jan-16 A															
S5_60740	OHVD Bay 1	100%	12d	29-Dec-15 A	21-Jan-16 A															
S5_60745	OHVD Bay 2	100%	12d	31-Dec-15 A	18-Jan-16 A															
S5_60750	OHVD Bay 3	100%	12d	02-Jan-16 A	18-Jan-16 A															
S5_60760	OHVD Bay 5	100%	12d	06-Jan-16 A	25-Jan-16 A															
S5_61080	OHVD Bay 6	100%	9d	20-Jan-16 A	16-Feb-16 A															
S5_61085	OHVD Bay 7	100%	9d	12-Feb-16 A	28-Feb-16 A															
S5_61095	OHVD Bay 9	100%	9d	12-Feb-16 A	28-Feb-16 A															
S5_61090	OHVD Bay 8	100%	9d	16-Feb-16 A	28-Feb-16 A															
S5_61100	OHVD Bay 10	100%	7d	16-Feb-16 A	26-Feb-16 A															
S5_61110	Shaft B Reinstatement - OHVD	40%	20d	20-Feb-16 A	29-Apr-16	122d														
TPCWAW- CCT RC Structure, Top Slab + Waterproofing																				
S5_60815	Top slab Bay 2	100%	10d	08-Jan-16 A	02-Feb-16 A															
S5_60820	Top slab Bay 3	100%	10d	11-Jan-16 A	16-Feb-16 A															
S5_60810	Top slab Bay 1	100%	11d	19-Jan-16 A	23-Feb-16 A															
S5_60825	Top slab Bay 4	100%	11d	19-Jan-16 A	24-Feb-16 A															
S5_61105	Shaft B Reinstatement - Top Slab	100%	15d	14-Feb-16 A	29-Feb-16 A															
S5_60830	Top slab Bay 5	100%	10d	19-Feb-16 A	29-Feb-16 A															
S5_60835	Top slab Bay 6	100%	12d	20-Feb-16 A	02-Mar-16 A															
S5_60840	Top slab Bay 7	100%	7d	20-Feb-16 A	05-Mar-16 A															
S5_60845	Top slab Bay 8	100%	16d	20-Feb-16 A	05-Mar-16 A															
S5_60865	Top slab Bay 9	100%	15d	20-Feb-16 A	07-Mar-16 A															
S5_60875	Top slab Bay 10	100%	5d	20-Feb-16 A	09-Mar-16 A															
S5_61120	Provide access to CWB (CC) Contractor - TPCWAW Area	100%	0d		29-Feb-16 A															
S6_9055	Provide Access to WDII Contractor for bulkhead wall removal	100%	0d		29-Feb-16 A															
S6_9135	Completion of Section 5 - TPCWAW Area (KD10), below -20mPD	100%	0d		09-Mar-16 A															
TPCWAW - King Post Load Transfer / Waterproofing on Top Slab																				
S6_9076	TPCWAW King post load transfer + waterproofing (except Bay 10)	100%	26d	04-Mar-16 A	29-Mar-16 A															
S5_61115	TPCWAW waterproofing - Bay 10	100%	2d	09-Mar-16 A	10-Mar-16 A															

- Remaining Work
- Actual Work
- ◆ Remaining Work
- ◆ Critical Remaining Work
- ◆ Milestone
- ◆ Summary
- ◆ Actual Work

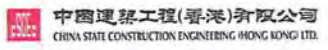
2 of 3

China State Construction Engineering (Hong Kong) Ltd.

Contract No. HY/2009/15 - Central Wan Chai By Pass - Tunnel (Causeway Bay Typhoon Shelter Section)

WORKS PROGRAMME UPDATE

Prepared by Quartz Jeung			
Date	Revision	Checked	Approved
20-Apr-16	Progress Update (based on WP Rev. N-3rd Submission)	WC	WSL



Activity ID	Activity Name	Physical % Complete	Original Duration	Start	Finish	Total Float	2016														
							Jan	Feb	Mar	Apr	May	Jun	Jul	Aug	Sep	Oct	Nov	Dec			
TPCWAW Removal of Temporary Reclamation																					
S6_9140	Backfilling/Removal of ELS + Re charge water	0%	25d	30-Mar-16 A	07-May-16	-379d															
S6_9105	Remove general fill/ seawall block (concurrent activities)	0%	25d	08-May-16	01-Jun-16	-379d															
S6_9120	Saw cut diaphragm wall	0%	102d	21-May-16	30-Aug-16*	-379d															
S6_7550	Completion of Section 6- (KD11), above - 20mPD	0%	0d		30-Aug-16	-214d															
Works in Portion 11 under KD9 (incl. Reinstatement of Vertical Seawall)																					
S6_9144	Reinstate vertical seawall (by marine plant)	0%	24d	18-Jun-16	15-Jul-16	-325d															
S6_9147	Reinstate ground level at Portion 11	0%	6d	16-Jul-16	22-Jul-16	-325d															
S6_9148	Completion of KD9- Works in Portion 11	0%	0d		22-Jul-16	-385d															

- Remaining Work
- Actual Work
- Remaining Work
- Critical Remaining Work
- Milestone
- Summary
- Actual Work

3 of 3

China State Construction Engineering (Hong Kong) Ltd.

Contract No. HY/2009/15 - Central Wan Chai By Pass - Tunnel (Causeway Bay Typhoon Shelter Section)

WORKS PROGRAMME UPDATE

Prepared by Quartz Jequinto

Date	Revision	Checked	Approved
20-Apr-16	Progress Update (based on WP Rev. N-3rd Submission)	WC	WSL

 中國建築工程(香港)有限公司
CHINA STATE CONSTRUCTION ENGINEERING (HONG KONG) LTD.

Activity ID	Activity Name	Ori Dur	Rem Dur	Scheduled/ Actual Start	Scheduled/ Actual Finish	Total Float	Calendar	2016																	2017		
								October					November				December					January					
								25	02	09	16	23	30	06	13	20	27	04	11	18	25	01	08	15	22		
S10-T5-2040	Tunnel Portion 5 - Excavate to Level S3 and Install Strut S3 (54,700m3@ 1100m3/d)	57	30	09-Oct-16 A	18-Nov-16	-613	Calendar Day	Tunnel Portion 5 - Excavate to Level S3 and Install Strut S3 (54,700m3@ 1100m3/d), Tunnel Portion 5 - Excavate to Final Formation Level (26,000m3@ 1100m3/d)																			
S10-T5-2050	Tunnel Portion 5 - Excavate to Final Formation Level (26,000m3@ 1100m3/d)	27	27	19-Nov-16	15-Dec-16	-613	Calendar Day	Tunnel Portion 5 - Excavate to Final Formation Level (26,000m3@ 1100m3/d)																			
S10-T5-2100	Carry out temp bulkhead breaking through between TP5 and C1	35	32	12-Sep-16 A	22-Nov-16	-525	HK Working Day	Carry out temp bulkhead breaking through between TP5 and C1, Carry out temp bulkhead breaking through between TP5 and C1																			
Bay 10 (3 Cells)																											
S10-T5-B10-1000	Base Slab - Trim Bored Pile & Blinding	7	7	26-Nov-16	03-Dec-16	-566	Calendar Day	Base Slab - Trim Bored Pile & Blinding, Base Slab - Trim Bored Pile & Blinding																			
S10-T5-B10-1010	Base Slab - Waterproofing	4	4	09-Dec-16	13-Dec-16	-572	Calendar Day	Base Slab - Waterproofing, Base Slab - Waterproofing																			
Bay 11 (3 Cells)																											
S10-T5-B11-1000	Base Slab - Trim Bored Pile & Blinding	7	7	24-Nov-16	01-Dec-16	-578	Calendar Day	Base Slab - Trim Bored Pile & Blinding, Base Slab - Trim Bored Pile & Blinding																			
S10-T5-B11-1010	Base Slab - Waterproofing	4	4	01-Dec-16	05-Dec-16	-578	Calendar Day	Base Slab - Waterproofing, Base Slab - Waterproofing																			
S10-T5-B11-1020	Base Slab - Rebar Fixing	10	10	05-Dec-16	15-Dec-16	-514	Calendar Day	Base Slab - Rebar Fixing, Base Slab - Rebar Fixing																			
S10-T5-B11-1030	Base Slab - Concrete	1	1	15-Dec-16	16-Dec-16	-514	Calendar Day	Base Slab - Concrete, Base Slab - Concrete																			
Bay 12 (3 Cells)																											
S10-T5-B12-1000	Base Slab - Trim Bored Pile & Blinding	7	7	22-Nov-16	29-Nov-16	-578	Calendar Day	Base Slab - Trim Bored Pile & Blinding, Base Slab - Trim Bored Pile & Blinding																			
S10-T5-B12-1010	Base Slab - Waterproofing	4	4	05-Dec-16	09-Dec-16	-578	Calendar Day	Base Slab - Waterproofing, Base Slab - Waterproofing																			
S10-T5-B12-1020	Base Slab - Rebar Fixing	10	10	09-Dec-16	19-Dec-16	-578	Calendar Day	Base Slab - Rebar Fixing, Base Slab - Rebar Fixing																			
Section 11 of the Works - Remainder of Works																											
Demolition Works																											
S11-DEMO-1100	Demolition of existing WSD salt water pumping station	53	27	13-Jun-16 A	15-Nov-16	-294	Calendar Day	Demolition of existing WSD salt water pumping station, Demolition of existing WSD salt water pumping station																			
S11-DEMO-1105	Remove marine deposit between the southern D-wall and old WSD salt water pumping station	30	30	16-Nov-16	16-Dec-16	-264	HK Working Day	Remove marine deposit between the southern D-wall and old WSD salt water pumping station																			
S11-DEMO-1300	Demolition of abandoned seawall down to +1.5mPD - at the north of Ex-Salt Water Pump Station	12	12	10-Nov-16	22-Nov-16	-76	HK Working Day	Demolition of abandoned seawall down to +1.5mPD - at the north of Ex-Salt Water Pump Station																			
Formation and Hard Landscaping Works																											
S11-FM-3000A	Tunnel Portion 3 & 4 Backfilling to -6mPD (90,000m3; 1,000m3/d)	102	56	09-Sep-16 A	16-Dec-16	-543	HK Working Day	Tunnel Portion 3 & 4 Backfilling to -6mPD (90,000m3; 1,000m3/d)																			
Misc. Works																											
Removal of Temporary Reclamation																											
S11-RTC-3010	Works within Temp D-Wall - Public Fill above roof to formation level of rock mound (31,800m3@1,000m3/d)	34	24	20-Aug-16 A	12-Nov-16	-221	HK Working Day	Works within Temp D-Wall - Public Fill above roof to formation level of rock mound (31,800m3@1,000m3/d)																			
S11-RTC-3020	Works within Temp D-Wall - Place rock mound to -6.0mPD (Grade 400: 6,000m3@500m3/d)	45	37	10-Oct-16 A	26-Nov-16	-568	HK Working Day	Works within Temp D-Wall - Place rock mound to -6.0mPD (Grade 400: 6,000m3@500m3/d)																			
S11-RTC-3022	Works within Temp D-Wall - Place Type A Rock fill, Geotextile and Filter to -6.0mPD	6	6	28-Nov-16	03-Dec-16	-568	HK Working Day	Works within Temp D-Wall - Place Type A Rock fill, Geotextile and Filter to -6.0mPD																			
S11-RTC-3023	Works within Temp D-Wall - Place Sorted Public Fill to -6.0mPD (18,600m3@1,550m3/d)	12	12	03-Dec-16	15-Dec-16	-568	HK Working Day	Works within Temp D-Wall - Place Sorted Public Fill to -6.0mPD (18,600m3@1,550m3/d)																			
S11-RTC-3024	Works within Temp D-Wall - Place Type A Rockfill and Filter from -6.0mPD to -2.0mPD	6	6	16-Dec-16	22-Dec-16	-568	HK Working Day	Works within Temp D-Wall - Place Type A Rockfill and Filter from -6.0mPD to -2.0mPD																			
S11-RTC-3025	Works within Temp D-Wall - Place Sorted Public Fill from -6.0mPD to -2.0mPD (17,500m3@1,450m3/d)	12	12	22-Dec-16	06-Jan-17	-568	HK Working Day	Works within Temp D-Wall - Place Sorted Public Fill from -6.0mPD to -2.0mPD (17,500m3@1,450m3/d)																			
Soft Landscaping & Establishment Works																											
Section 12 of the Works - Protection and Preservation of Existing Trees																											
S12-0010	Protection and preservation of existing trees	2111	521	24-Feb-10 A	24-Mar-18	-570	Calendar Day	Protection and preservation of existing trees																			

<ul style="list-style-type: none"> ◆ Milestone ◆ Critical Milestones ■ Current Works ■ Critical Works ■ Remaining Level of Effort 	<p>CHUN WO - CRGL</p> <p>JOINT VENTURE</p>	<p>CEDD CONTRACT NO. HK/2009/02</p> <p>WD II - Central Wanchai Bypass at Wan Chai East (Contract 2)</p> <p>3-MONTH ROLLING PROGRAMME (dd 20-Oct-16)</p>	Date	Revision	Checked	Approved
			07-Jul-16	Rev. 18		



Activity ID	Activity Name	Remaining Dur	Early Start	Early Finish	Total Float	2016	2017			
						Sep	Oct	Nov	Dec	Jan
HK/2012/08 Revised Works Programme Rev.8 (DD 31 August 2016)										
Dredging and Reclamation										
Marine Work Construction										
Zone A1										
Seawall Construction - Zone A1										
MAR10330	Zone A1 - Seawall - Install remaining seawall type 3 (after reinstatement of culver k and cooling mains)	11	31-Aug-16	10-Sep-16	-68					
MAR10340	Zone A1 - seawall - place type A behind seawall type 3	5	11-Sep-16	15-Sep-16	-68					
MAR10345	Zone A1 - seawall - lay geotextile and filter behind seawall Type 3	6	16-Sep-16	21-Sep-16	-68					
Others - Landing Steps										
MAR21360	Zone A2 - [summary] landing steps at seawall 4	77	05-Dec-16	11-Mar-17	-28					
MAR21380	Zone B - [summary] landing steps at seawall 5	73	05-Dec-16	07-Mar-17	-24					
MAR21400	Zone D - [summary] landing steps at seawall 9	70	05-Dec-16	03-Mar-17	-21					
MAR21420	Zone A2 - [summary] landing steps at seawall 13	73	05-Dec-16	07-Mar-17	-24					
Works for Section Completion										
Construction										
Section II - MVB Structure										
MVB Substructure - ELS & Structural Works for Portion A										
MVB Substructure - Structural Works for Portion A										
SII11250	Sec II - MVB A : Remove strut S1	7	20-Sep-16	26-Sep-16	-166					
SII11252	Sec II - MVB A : Remove bulkhead at east	46	20-Sep-16	04-Nov-16	-159					
SII11254	Sec II - MVB A : Remove bulkhead at west	46	02-Oct-16	16-Nov-16	-166					
SII11260	Sec II - MVB A : Construct Bay 14- B2M/F wall	6	29-Jul-16 A	05-Sep-16	-166					
SII11300	Sec II - MVB A : Construct Bay 15 - B2M/F OHVD	10	06-Sep-16	15-Sep-16	-166					
SII11420	Sec II - MVB A : Construct Bay 14a - B2M/F wall (adjacent to bulkhead)	13	12-Nov-16	24-Nov-16	-166					
SII11960	Sec II - MVB A : Construct Bay 15a - B2M/F OHVD (adjacent to bulkhead)	6	25-Nov-16	30-Nov-16	-166					
SII11980	Sec II - MVB A : Construct Bay 16 - Wall btw OHVD and Roof)	19	27-Sep-16	15-Oct-16	-131					
SII12140	Sec II - MVB A : Construct Bay 17 - Roof Slab	17	16-Oct-16	01-Nov-16	-127					
SII12160	Sec II - MVB A : Construct Bay 18 - Roof Slab	21	16-Oct-16	05-Nov-16	-131					
SII12340	Sec II - MVB A : Construct Bay 16a, 17a & 18a - Wall & Slab (Adjacent to bulkhead)	10	01-Dec-16	10-Dec-16	-166					
MVB Substructure - Other Works for Portion A										
SII11320	Sec II - MVB A: Remove Strut & flasework	7	11-Dec-16	17-Dec-16	-166					
MVB Substructure - ELS & Structural Works for Portion B										
MVB Substructure - Structural Works for Portion B										
SII11920	Sec II - MVB B: Construct Bay K - B2M/F Wall	16	01-Aug-16 A	15-Sep-16	-103					
SII11930	Sec II - MVB B: Construct Bay L - B2M/F Top Slab	14	11-Sep-16	24-Sep-16	-103					

Data Date:
31-Aug-16

- Current Milestone
- Actual Work
- Critical Remaining Work
- Remaining Work
- Remaining Level of Effort

3-Months Rolling Programme for Non-CRIII Area (Sep 2016-Nov 2016)
(Ref. to Revised Works Programme (Rev. 8))

Date	Revision	Checked	Approved
31-Aug-16	8		



Activity ID	Activity Name	Remaining Dur	Early Start	Early Finish	Total Float	2016				2017
						Sep	Oct	Nov	Dec	Jan
SII11940	Sec II - MVB B: Remove Strut SL1 & Concrete Backing	8	28-Sep-16	05-Oct-16	-103					
SII12080	Sec II - MVB B: Saw cut southern diaphragm wall	8	06-Oct-16	13-Oct-16	-103					
SII12360	Sec II - MVB B: Construct Bay M - B1/F Wall	26	14-Oct-16	08-Nov-16	-103					
SII12420	Sec II - MVB B: Construct Bay M - B1/F Top Slab	8	09-Nov-16	16-Nov-16	-103					
MVB Substructure - Other Works for Portion B										
SII12100	Sec III - MVB B: remove strut and flamework	12	17-Nov-16	30-Nov-16	-85					
SII12120	Sec II - MVB B: seal up temp access openings	12	01-Dec-16	12-Dec-16	-103					
MVB Substructure - Diaphragm Wall for Portion C										
MVB C - Sheetpile Installation										
SII10670	Sec II - MVB C - sheetpile wall installation	5	13-Aug-16 A	04-Sep-16	-112					
MVB Substructure - ELS & Structural Works for Portion C										
MVB Substructure - ELS for Portion C										
SII12020	Sec II - MVB C: Excavation down to +1.7mPD	6	11-Sep-16	16-Sep-16	-112					
SII12040	Sec II - MVB C: Install Strut S1	5	17-Sep-16	21-Sep-16	-112					
SII12060	Sec II - MVB C: Excavation down to formation (-1.8mPD/-3.0mPD)	7	22-Sep-16	28-Sep-16	-112					
SII12180	Sec II - MVB C: Cast Blinding layer & pile head treatment	8	29-Sep-16	06-Oct-16	-112					
SII12380	Sec III - MVB C: Remove bulhead wall between MVB plant room and Zone CW	20	14-Oct-16	02-Nov-16	-112					
SII12400	Sec III - MVB C: Remove bulhead wall between MVB plant room and MVB south	20	03-Nov-16	22-Nov-16	-112					
MVB Substructure - Structural Works for Portion C										
SII12200	Sec II - MVB C: Construct Slab B1/F	7	07-Oct-16	13-Oct-16	-112					
SII12220	Sec II - MVB C: Remove Strut S1	3	23-Nov-16	25-Nov-16	-112					
SII12240	Sec II - MVB C: Construct Wall of B1/F	9	26-Nov-16	04-Dec-16	-112					
SII12260	Sec II - MVB C: Construct Floor Slab of G/F	5	05-Dec-16	09-Dec-16	-112					
MVB Substructure - Other Works for Portion C										
SII12280	Sec II - MVB C: Remove all struts and Falsework	6	10-Dec-16	15-Dec-16	-112					
SII12300	Sec II - MVB C: seal up temp access openings	12	10-Dec-16	21-Dec-16	-112					
Section II A - CWB Tunnel & Slip Road Structures and Facilities										
CWB A2(2)										
CWB A2 (2) - ELS & Tunnel Structure										
CWB A2 - Tunnel Structure										
SIIA11700	Sec II A - CWB A2(2): base, wall, OHVD & roof (bay 1 -Adjacent to A1)	15	11-Jun-16 A	14-Sep-16	-97					
SIIA11750	Sec II A - CWB A2(2): base, wall, OHVD & roof (bay 2)	4	12-May-16 A	03-Sep-16	-93					
CWB A2 - Other Works										
SIIA12530	Sec II A - CWB A2(2) : waterproofing and backfill to +4.0mPD	45	15-Sep-16	29-Oct-16	-92					
CWB A2 (2) - Associated Facilities										
SIIA14320	Sec II A - CWB A2(2): Civil Provisions - lay screeding	7	08-Sep-16	14-Sep-16	-97					
SIIA14430	Sec II A - CWB A2(2): Civil Provisions - cast cable trough	8	15-Sep-16	22-Sep-16	-97					
CWB B & A2(1)										
CWB B - ELS & Tunnel Structure										
CWB B - ELS										



Activity ID	Activity Name	Remaining Dur	Early Start	Early Finish	Total Float	2016					2017		
						Sep	Oct	Nov	Dec	Jan			
CWB B - Inside Concrete Plug													
SIIA13662	Sec II A - CWB B Inside Concrete Plug: Cut and remove the excess blinding layer	18	23-Aug-16 A	17-Sep-16	-175	[Red bar from 23-Aug-16 to 17-Sep-16]							
SIIA13664	Sec II A - CWB B Inside Concrete Plug: Saw Cut the Base Slab of C4 Unit	18	27-Aug-16 A	21-Sep-16	-144	[Red bar from 27-Aug-16 to 21-Sep-16]							
SIIA13682	Sec II A - CWB B: Demolish concrete plug (near C4 unit)	25	13-Oct-16	06-Nov-16	-180		[Red bar from 13-Oct-16 to 06-Nov-16]						
CWB B - Outside Concrete Plug													
SIIA 15200	Sec II A - CWB B Outside Concrete Plug: Tunnel Formation Excavation	5	29-Aug-16 A	04-Sep-16	-180	[Red bar from 29-Aug-16 to 04-Sep-16]							
SIIA 15220	Sec II A - CWB B Outside Concrete Plug: Vertical Blinding	1	05-Sep-16	05-Sep-16	-180		[Red dot at 05-Sep-16]						
SIIA 15260	Sec II A - CWB B Outside Concrete Plug: Remove struts & Sheetpile	17	06-Sep-16	22-Sep-16	-180	[Red bar from 06-Sep-16 to 22-Sep-16]							
CWB A2(1) & B - Tunnel Structure													
SIIA13570	Sec II A - CWB A2(1): Construct Bay 4 - Wall (remaining)	12	25-Oct-16	05-Nov-16	-186		[Red bar from 25-Oct-16 to 05-Nov-16]						
SIIA13572	Sec II A - CWB A2(1): Construct Bay 4 - OHVD	16	06-Nov-16	21-Nov-16	-186			[Red bar from 06-Nov-16 to 21-Nov-16]					
SIIA13574	Sec II A - CWB A2(1): Construct Bay 4 - Top Slab	14	22-Nov-16	05-Dec-16	-186			[Red bar from 22-Nov-16 to 05-Dec-16]					
SIIA13580	Sec II A - CWB B: Construct Bay 5 - Exhaust Duct Base Slab (South)	8	01-Sep-16*	08-Sep-16	0	[Red bar from 01-Sep-16 to 08-Sep-16]							
SIIA13590	Sec II A - CWB B: Construct Bay 5 - Exhaust Duct Wall	8	17-Sep-16	24-Sep-16	-190	[Red bar from 17-Sep-16 to 24-Sep-16]							
SIIA13600	Sec II A - CWB B: Construct Bay 6 - Base Slab	14	25-Sep-16	08-Oct-16	-190	[Red bar from 25-Sep-16 to 08-Oct-16]							
SIIA13610	Sec II A - CWB B: Construct Bay 6 - Wall	14	25-Oct-16	07-Nov-16	-181		[Red bar from 25-Oct-16 to 07-Nov-16]						
SIIA13620	Sec II A - CWB B: Construct Bay 6 - OHVD	13	11-Nov-16	23-Nov-16	-184			[Red bar from 11-Nov-16 to 23-Nov-16]					
SIIA13630	Sec II A - CWB B: Construct Bay 6 - Roof Slab	12	27-Nov-16	08-Dec-16	-187			[Red bar from 27-Nov-16 to 08-Dec-16]					
SIIA13640	Sec II A - CWB B: Construct Bay 7a - Base Slab	18	25-Sep-16	12-Oct-16	-190	[Red bar from 25-Sep-16 to 12-Oct-16]							
SIIA13645	Sec II A - CWB B: Remove Strut S2 & S3 and concrete packing (for Bay 4, 6 & 7a)	9	16-Oct-16	24-Oct-16	-190		[Red bar from 16-Oct-16 to 24-Oct-16]						
SIIA13650	Sec II A - CWB B: Construct Bay 7a - Wall	17	25-Oct-16	10-Nov-16	-190		[Red bar from 25-Oct-16 to 10-Nov-16]						
SIIA13660	Sec II A - CWB B: Construct Bay 7a - OHVD	16	11-Nov-16	26-Nov-16	-190			[Red bar from 11-Nov-16 to 26-Nov-16]					
SIIA13680	Sec II A - CWB B: Construct Bay 7a - Top Slab	15	27-Nov-16	11-Dec-16	-190			[Red bar from 27-Nov-16 to 11-Dec-16]					
SIIA13700	Sec II A - CWB B: Construct Bay 7b - Base Slab	11	23-Sep-16	03-Oct-16	-180	[Red bar from 23-Sep-16 to 03-Oct-16]							
SIIA13710	Sec II A - CWB B: Remove Strut S2 & S3 (for Bay 7b)	6	07-Oct-16	12-Oct-16	-180	[Red bar from 07-Oct-16 to 12-Oct-16]							
SIIA13880	Sec II A - CWB B: Construct Bay 7b - Wall	11	07-Nov-16	17-Nov-16	-180			[Red bar from 07-Nov-16 to 17-Nov-16]					
SIIA13900	Sec II A - CWB B: Construct Bay 7b - OHVD	10	18-Nov-16	27-Nov-16	-180			[Red bar from 18-Nov-16 to 27-Nov-16]					
SIIA13920	Sec II A - CWB B: Construct Bay 7b - Top Slab	10	28-Nov-16	07-Dec-16	-180			[Red bar from 28-Nov-16 to 07-Dec-16]					
CWB A2(1) & B - Other Works													
CWB A2(1) & B - Associated Facilities													
SIIA14460	Sec II A - CWB A2(1): Civil Provisions - lay screeding	7	06-Dec-16	12-Dec-16	-186				[Red bar from 06-Dec-16 to 12-Dec-16]				
SIIA14480	Sec II A - CWB A2(1): Civil Provisions - cast cable trough	8	13-Dec-16	20-Dec-16	-186				[Red bar from 13-Dec-16 to 20-Dec-16]				
SIIA14580	Sec II A - CWB B: Civil Provisions - lay screeding	6	12-Dec-16	17-Dec-16	-190				[Red bar from 12-Dec-16 to 17-Dec-16]				
CWB C (W)													
CWB C(W) - ELS & Tunnel Structure													
CWB C(W) - ELS													
CWB C(W) - ELS Inside Concrete Plug													
SIIA 12210	Sec II A - CWB CW inside Concret Plug: cut and remove 2m strip opening along bulkhead	6	31-Aug-16	05-Sep-16	-186	[Red bar from 31-Aug-16 to 05-Sep-16]							
SIIA 12230	Sec II A - CWB CW inside Concret Plug: cut and remove base slab of C4 unit	21	06-Sep-16	26-Sep-16	-186	[Red bar from 06-Sep-16 to 26-Sep-16]							
SIIA 12250	Sec II A - CWB CW inside Concret Plug: cut and remove the excess blinding layer	9	25-Aug-16 A	08-Sep-16	874	[Green bar from 25-Aug-16 to 08-Sep-16]							



Activity ID	Activity Name	Remaining Dur	Early Start	Early Finish	Total Float	2016				2017
						Sep	Oct	Nov	Dec	Jan
SIIA 12270	Sec II A - CWB CW inside Concret Plug: remove concrete bulkhead	20	19-Oct-16	07-Nov-16	-186					
CWB C(W) - ELS Outside Concrete Plug										
SIIA 13100	Sec II A - CWB CW outside Concrete Plug: Remove struts S3	4	30-Aug-16 A	03-Sep-16	-155					
SIIA 13120	Sec II A - CWB CW outside Concrete Plug: Install transverse strut	3	04-Sep-16	06-Sep-16	-155					
SIIA 13140	Sec II A - CWB CW outside Concrete Plug: Remove strut S1 & S2	11	07-Sep-16	17-Sep-16	-155					
SIIA 13160	Sec II A - Sec II A - CWB CW outside Concrete Plug: Tunnel formation excavation	4	25-Aug-16 A	03-Sep-16	-185					
SIIA 13180	Sec II A - CWB CW outside Concrete Plug: Exhaust duct formation excavation	5	05-Sep-16	09-Sep-16	-185					
SIIA 13200	Sec II A - CWB CW outside Concrete Plug: blinding layer and remove diagonal struts & sheetpile	16	10-Sep-16	25-Sep-16	-185					
CWB C(W) - Tunnel Structure										
SIIA12160	Sec II A - CWB CW: Construct Bay 1 - Base Slab	12	27-Sep-16	08-Oct-16	-186					
SIIA12180	Sec II A - CWB CW: Remove Struts S2 & S3	6	13-Oct-16	18-Oct-16	-186					
SIIA12300	Sec II A - CWB CW: Construct Bay 1 - Wall	8	08-Nov-16	15-Nov-16	-186					
SIIA12320	Sec II A - CWB CW: Construct Bay 1 - OHVD	10	18-Nov-16	27-Nov-16	-186					
SIIA12340	Sec II A - CWB CW: Construct Bay 1 - Top Slab	10	28-Nov-16	07-Dec-16	-186					
SIIA12380	Sec II A - CWB CW: Construct Bay 2b - Exhaust duct base slab	9	17-Sep-16	25-Sep-16	-165					
SIIA12400	Sec II A - CWB CW: Construct Bay 2b - Exhaust duct wall	8	26-Sep-16	03-Oct-16	-165					
SIIA12420	Sec II A - CWB CW: Construct Bay 2b - Tunnel base slab	13	04-Oct-16	16-Oct-16	-165					
SIIA12460	Sec II A - CWB CW: Construct Bay 2b - B1/F slab	8	27-Oct-16	03-Nov-16	-136					
SIIA12480	Sec II A - CWB CW: Construct Bay 2b - B1/F wall	9	04-Nov-16	12-Nov-16	-136					
SIIA12520	Sec II A - CWB CW: Construct Bay 2b - B1/F roof slab	11	13-Nov-16	23-Nov-16	-136					
SIIA12640	Sec II A - CWB CW: Construct Bay 2a & 2b - Wall	8	17-Oct-16	24-Oct-16	-165					
SIIA12700	Sec II A - CWB CW: Construct Bay 2a & 2b - OHVD	10	27-Oct-16	05-Nov-16	-165					
SIIA12720	Sec II A - CWB CW: Construct Bay 2a & 2b - Roof Slab	11	06-Nov-16	16-Nov-16	-165					
CWB C(W) - Other Works										
SIIA12200	Sec II A - CWB CW: Cut Down Dwall Head	21	08-Dec-16	28-Dec-16	-142					
SIIA12220	Sec II A - CWB CW: backfill to +4.0mPD	52	08-Dec-16	28-Jan-17	-150					
CWB C(W) - Associated Facilities										
SIIA14040	Sec II A - CWB CW: Civil Provisions - lay screeding	6	08-Dec-16	13-Dec-16	-186					
SIIA14220	Sec II A - CWB CW: Civil Provisions - cast cable trough	7	14-Dec-16	20-Dec-16	-186					
CWB C (E)										
CWB C(E) - ELS & Tunnel Structure										
CWB C(E) - ELS										
CWB C(E) - ELS - Bay 2 & 3										
SIIA15600	Sec II A - CWB CE: Demolish Bulkhead at C1 Interface	19	31-Aug-16	18-Sep-16	-166					
CWB C(E) - Tunnel Structure										
SIIA13255	Sec II A - CWB CE: Construct Bay 1 - Wall	46	26-Aug-16 A	15-Oct-16	-164					
SIIA13275	Sec II A - CWB CE: Construct Bay 1 - OHVD	14	18-Oct-16	31-Oct-16	-164					
SIIA13295	Sec II A - CWB CE: Construct Bay 1 - Roof Slab	13	01-Nov-16	13-Nov-16	-164					
SIIA13315	Sec II A - CWB CE: Construct Bay 2 - Wall	31	30-Aug-16 A	30-Sep-16	-151					
SIIA13335	Sec II A - CWB CE: Construct Bay 2 - OHVD	14	03-Oct-16	16-Oct-16	-151					



Activity ID	Activity Name	Remaining Dur	Early Start	Early Finish	Total Float	2016					2017	
						Sep	Oct	Nov	Dec	Jan		
SIIA13355	Sec II A - CWB CE: Construct Bay 2 - Roof Slab	15	17-Oct-16	31-Oct-16	-151							
SIIA13375	Sec II A - CWB CE: Construct Bay 3 - Base Slab	8	19-Sep-16	26-Sep-16	-166							
SIIA13395	Sec II A - CWB CE: Remove Strut S2 & S3 (for Bay 3)	5	27-Sep-16	01-Oct-16	-166							
SIIA13415	Sec II A - CWB CE: Construct Bay 3 - Wall	22	02-Oct-16	23-Oct-16	-166							
SIIA13435	Sec II A - CWB CE: Construct Bay 3 - OHVD	11	26-Oct-16	05-Nov-16	-166							
SIIA13455	Sec II A - CWB CE: Construct Bay 3 - Roof Slab	10	06-Nov-16	15-Nov-16	-166							
CWB C(E) - Other Works												
SIIA13300	Sec II A - CWB CE: Dismantle Scaffolding	24	16-Nov-16	09-Dec-16	-123							
SIIA13320	Sec II A - CWB CE: Cut Down Dwall Head	45	16-Nov-16	30-Dec-16	-144							
SIIA13325	Sec II A - CWB CE: backfill to +4.0mPD	47	16-Nov-16	01-Jan-17	-146							
CWB C(E) - Associated Facilities												
SIIA14222	Sec II A - CWB CE: Civil Provisions - lay screeding	7	16-Nov-16	22-Nov-16	-166							
SIIA14280	Sec II A - CWB CE: Civil Provisions - cast cable trough	8	23-Nov-16	30-Nov-16	-166							
CWB C - Exhaust Duct												
CWB C - Exhaust Duct Temp Work & ELS												
SIIA12900	Sec II A - Exhaust Duct at Slip Rd3: Excavation & Shoring - Bay 1	20	19-Sep-16*	08-Oct-16	-165							
SIIA12910	Sec II A - Exhaust Duct at Slip Rd3: Excavation & Shoring - Bay 2	15	19-Sep-16	03-Oct-16	-150							
SIIA12920	Sec II A - Exhaust Duct at Slip Rd3: Excavation & Shoring - Bay 3	10	07-Oct-16	16-Oct-16	-150							
CWB C - Exhaust Duct Structural Work												
SIIA12938	Sec II A - Exhaust Duct at Slip Rd3: Construt Bay 1 - base slab	5	09-Oct-16	13-Oct-16	-165							
SIIA12939	Sec II A - Exhaust Duct at Slip Rd 3: Demolish bulkhead between MVB south and exhaust duct	21	19-Oct-16	08-Nov-16	-165							
SIIA12940	Sec II A - Exhaust Duct at Slip Rd3: Construt Bay 1 - wall	13	09-Nov-16	21-Nov-16	-165							
SIIA13480	Sec II A - Exhaust Duct at Slip Rd3: Construt Bay 1 - roof slab	8	22-Nov-16	29-Nov-16	-165							
SIIA13520	Sec II A - Exhaust Duct at Slip Rd3: Construt Bay 2 - base slab	5	04-Oct-16	08-Oct-16	-122							
SIIA13540	Sec II A - Exhaust Duct at Slip Rd3: Construt Bay 2 - wall & roof slab	9	09-Oct-16	17-Oct-16	-122							
SIIA13560	Sec II A - Exhaust Duct at Slip Rd3: Construt Bay 3 - base slab	5	17-Oct-16	21-Oct-16	-150							
SIIA13575	Sec II A - Exhaust Duct at Slaip Rd 3: Demolish bulkhead at C1	15	22-Oct-16	05-Nov-16	-150							
SIIA13960	Sec II A - Exhaust Duct at Slip Rd3: Construt Bay 3 - wall & roof slab	9	06-Nov-16	14-Nov-16	-150							
CWB C - Exhaust Duct Others												
SIIA12950	Sec II A - Exhaust Duct at Slip Rd3: curing and dismantle formwork / falsework	12	15-Nov-16	26-Nov-16	-93							
SIIA12952	Sec II A - Exhaust Duct at Slip Rd3: Backfilling	15	18-Nov-16	02-Dec-16	-93							
CWB D - Slip Road 1												
CWB D - Slip Road 1 - ELS & Tunnel Structure												
CWB D - Slip Road 1 - ELS												
CWB D - SR1 - ELS - Bay 1 & 2												
SIIA 12582	Sec II A - CWB SR1 Concrete Plug: Saw cut to formation	26	31-Aug-16	25-Sep-16	-172							
SIIA 12584	Sec II A - CWB SR1 Concrete Plug: Remove concrete bulkhead	26	26-Sep-16	21-Oct-16	-172							
SIIA 12622	Sec II A - CWB SR1 Bay 1&2: 2nd layer excavation & strutting	9	24-Aug-16 A	08-Sep-16	-142							
SIIA 12642	Sec II A - CWB SR1 Bay 1&2: Formation excavation	9	09-Sep-16	17-Sep-16	-142							
CWB D - SR1 - ELS - Bay 3												



Activity ID	Activity Name	Remaining Dur	Early Start	Early Finish	Total Float	2016					2017	
						Sep	Oct	Nov	Dec	Jan		
SIIA 12590	Sec II A - CWB SR1 Bay 3: Blinding Layer	3	31-Aug-16	02-Sep-16	-151							
CWB D - Slip Road 1 - Tunnel Structure												
SIIA13060	Sec II A - CWB SR1: Construct Bay 1 - Base Slab	13	22-Oct-16	03-Nov-16	-172							
SIIA13070	Sec II A - CWB SR1: Remove Strut S1 & S2	5	07-Nov-16	11-Nov-16	-172							
SIIA13080	Sec II A - CWB SR1: Construct Bay 1 - Roof Slab	13	12-Nov-16	24-Nov-16	-172							
SIIA13220	Sec II A - CWB SR1: Construct Bay 2 - Base Slab	15	18-Sep-16	02-Oct-16	-142							
SIIA13230	Sec II - CWB SR1: Remove Strut S1 & S2	4	06-Oct-16	11-Oct-16	-118							
SIIA13240	Sec II A - CWB SR1: Construct Bay 2 - Roof Slab	16	12-Oct-16	27-Oct-16	-144							
SIIA13260	Sec II A - CWB SR1: Construct Bay 3 - Trough Base Slab	7	03-Sep-16	09-Sep-16	-151							
SIIA13280	Sec II A - CWB SR1: Construct Bay 3 - Trough Wall	7	18-Sep-16	24-Sep-16	-151							
SIIA13380	Sec II A - CWB SR1: Construct Bay 3 - Base Slab	14	25-Sep-16	08-Oct-16	-151							
SIIA13440	Sec II A - CWB SR1: Construct Bay 3 - Roof Slab	18	17-Oct-16	03-Nov-16	-151							
SIIA13460	Sec II A - CWB SR1: Construct Bay 4 - Roof Slab	18	17-Oct-16	03-Nov-16	-151							
SIIA13940	Sec II A - CWB SR1: Cut Down Dwall Head	55	25-Nov-16	18-Jan-17	-120							
CWB D - Associated Facilities												
SIIA12580	Sec II A - CWB SR1: Civil Provisions - lay screeding	7	25-Nov-16	01-Dec-16	-172							
SIIA14000	Sec II A - CWB SR1: Civil Provisions - cast cable trough	8	29-Nov-16	06-Dec-16	-172							
CWB D - Slip Road 1 - Trough / Retaining Wall												
CWB D - Slip Road 1 - Trough/Retaining Wall Temp Work & ELS												
SIIA12760	Sec II A - CWB SR1 Trough & RW: install sheetpile	13	05-Sep-16*	17-Sep-16	-157							
SIIA12780	Sec II A - CWB SR1 Trough & RW: Excavation & Shoring	23	18-Sep-16	10-Oct-16	-157							
CWB D - Slip Road 1 - Trough/Retaining Wall Structure												
SIIA12800	Sec II A - CWB SR1 Trough & RW: Trough Structure (bay 1)	12	11-Oct-16	22-Oct-16	-157							
SIIA13720	Sec II A - CWB SR1 Trough & RW: Trough Structure (bay 2)	12	23-Oct-16	03-Nov-16	-157							
SIIA13740	Sec II A - CWB SR1 Trough & RW: Trough Structure (bay 3)	12	29-Oct-16	09-Nov-16	-157							
SIIA13760	Sec II A - CWB SR1 Trough & RW: construct upstand wall along top of Trough Structure	12	03-Nov-16	14-Nov-16	-157							
SIIA13780	Sec II A - CWB SR1 Trough & RW: install waling	7	15-Nov-16	21-Nov-16	-157							
SIIA13800	Sec II A - CWB SR1 Trough & RW: Retaining Walls RW3 (bay 1)	12	25-Oct-16	05-Nov-16	-152							
SIIA13820	Sec II A - CWB SR1 Trough & RW: Retaining Walls RW3 (bay 2)	12	05-Nov-16	16-Nov-16	-152							
SIIA13840	Sec II A - CWB SR1 Trough & RW: Retaining Walls RW3 (bay 3)	12	25-Oct-16	05-Nov-16	-152							
SIIA13860	Sec II A - CWB SR1 Trough & RW: Retaining Walls RW4 (bay 1)	12	05-Nov-16	16-Nov-16	-152							
CWB D - Slip Road 1 - Trough/ Retaining Wall Other Works												
SIIA13865	Sec II A - CWB SR1: backfill to +4.0mPD	38	17-Nov-16	03-Jan-17	-111							
Section III A - Road A2, A4, A5, Area 11; Implement 2nd Stage ITA												
Roadwork & Utilities at A1												
SIIIA10260	Sec III A - roadwork and utilities (Zone A1) - Backfill to pavement founding level	42	31-Aug-16	21-Oct-16	-69							
SIIIA10280	Sec III A - roadwork and utilities (Zone A1) - storm water drain & sub-soil drain	42	09-Sep-16	31-Oct-16	-69							
SIIIA10300	Sec III A - roadwork and utilities (Zone A1) - Fresh watermain & Irrigation Mains	42	22-Sep-16	11-Nov-16	-69							
SIIIA10320	Sec III A - roadwork and utilities (Zone A1) - Gas main	42	05-Oct-16	23-Nov-16	-69							
SIIIA10340	Sec III A - roadwork and utilities (Zone A1) - HEC	42	15-Oct-16	02-Dec-16	-69							



Activity ID	Activity Name	Remaining Dur	Early Start	Early Finish	Total Float	2016					2017	
						Sep	Oct	Nov	Dec	Jan		
SIIIA10360	Sec III A - roadwork and utilities (Zone A1) - sub-base	42	25-Oct-16	12-Dec-16	-69							
SIIIA10380	Sec III A - roadwork and utilities (Zone A1) - road kerb	42	05-Nov-16	23-Dec-16	-69							
SIIIA10400	Sec III A - roadwork and utilities (Zone A1) - flexible pavement	42	22-Nov-16	12-Jan-17	-62							
SIIIA10420	Sec III A - roadwork and utilities (Zone A1) - construct u-channel	42	05-Nov-16	23-Dec-16	-58							
SIIIA10440	Sec III A - roadwork and utilities (Zone A1) - pave footpath concrete	42	02-Dec-16	23-Jan-17	-69							
SIIIA10460	Sec III A - roadwork and utilities (Zone A1) - Road Lighting, TCSS Ducts & Traffic Signs	40	12-Dec-16	03-Feb-17	-69							
SIIIA10480	Sec III A - roadwork and utilities (Zone A1) - lay footpath paving block	45	17-Nov-16	11-Jan-17	-60							
SIIIA10500	Sec III A - roadwork and utilities (Zone A1) - Road sign and road marking	40	03-Dec-16	21-Jan-17	-62							
Roadwork & Utilities at A2												
SIIIA10580	Sec III A - roadwork and utilities (Zone A2) - Backfill to pavement founding level	40	11-Oct-16	25-Nov-16	-76							
SIIIA10600	Sec III A - roadwork and utilities (Zone A2) - storm water drain & sub-soil drain	40	20-Oct-16	05-Dec-16	-76							
SIIIA10620	Sec III A - roadwork and utilities (Zone A2) - Fresh watermain & Irrigation Mains	40	01-Nov-16	16-Dec-16	-76							
SIIIA10640	Sec III A - roadwork and utilities (Zone A2) - Gas main	40	08-Nov-16	23-Dec-16	-76							
SIIIA10660	Sec III A - roadwork and utilities (Zone A2) - HEC	40	15-Nov-16	03-Jan-17	-76							
SIIIA10680	Sec III A - roadwork and utilities (Zone A2) - sub-base	40	22-Nov-16	10-Jan-17	-76							
SIIIA10700	Sec III A - roadwork and utilities (Zone A2) - road kerb	40	01-Dec-16	19-Jan-17	-76							
SIIIA10720	Sec III A - roadwork and utilities (Zone A2) - flexible pavement	50	10-Dec-16	14-Feb-17	-76							
SIIIA10740	Sec III A - roadwork and utilities (Zone A2) - construct u-channel	50	29-Nov-16	02-Feb-17	-68							
SIIIA10760	Sec III A - roadwork and utilities (Zone A2) - pave footpath concrete	40	08-Dec-16	26-Jan-17	-74							
SIIIA10800	Sec III A - roadwork and utilities (Zone A2) - lay footpath paving block	40	10-Dec-16	02-Feb-17	-74							
Roadwork & Utilities at D												
SIIIA11090	Sec III A - roadwork and utilities (Zone D) - backfill to pavement founding level	50	08-Dec-16	11-Feb-17	-111							
SIIIA11100	Sec III A - roadwork and utilities (Zone D) - storm water drain & sub-soil drain	50	14-Dec-16	17-Feb-17	-111							
SIIIA11110	Sec III A - roadwork and utilities (Zone D) - Fresh watermain & Irrigation Mains	50	14-Dec-16	17-Feb-17	-107							
SIIIA11120	Sec III A - roadwork and utilities (Zone D) - Gas main	50	14-Dec-16	17-Feb-17	-103							
SIIIA11130	Sec III A - roadwork and utilities (Zone D) - HEC	50	14-Dec-16	17-Feb-17	-103							
Box Culvert L1 & FRP-L - Bay 8												
Box Culvert L1 & FRP-L - Bay 8 Structure												
CUL11320	Culvert L - bay 8 - construct pile cap	23	25-Jul-16 A	22-Sep-16	6							
CUL11322	Culvert L - bay 8 - construct base slab	26	23-Sep-16	18-Oct-16	6							
CUL11326	Culvert L - Bay 8 - construct wall	21	19-Oct-16	08-Nov-16	6							
CUL11328	Culvert L - bay 8 - construct top slab	11	09-Nov-16	19-Nov-16	6							
Box Culvert L1 & FRP-L - Bay 8 Others												
CUL11340	Culvert L - bay 8 - backfill above box section	12	21-Nov-16	03-Dec-16	5							
Section VI D - Area 8B & 10												
WDII Box 1 Construction												
WDII Box 1 Existing Pile Head and Dry Dock												
WD-C3054	Sec VID - Install rebar & formwork at Wall 12	24	09-Sep-16*	02-Oct-16	-175							
WD-C3056	Sec VID - Install rebar & formwork at Wall BH	24	16-Sep-16	09-Oct-16	-168							
WD-C3058	Sec VID - Install rebar & formwork at Wall 15 & 16	24	23-Sep-16	16-Oct-16	-175							



Activity ID	Activity Name	Remaining Dur	Early Start	Early Finish	Total Float	2016				2017
						Sep	Oct	Nov	Dec	Jan
WD-C3072	Sec VID - Formwork striking, tie bolt hole and waterproofing	20	18-Aug-16 A	19-Sep-16	-178	[Red bar from Sep 18 to Sep 19]				
WD-C3092	Sec VID - Install internal strutting S1	9	22-Sep-16	30-Sep-16	-178	[Red bar from Sep 22 to Sep 30]				
WD-C3112	Sec VID - Install buoyancy tank	9	01-Oct-16	09-Oct-16	-178	[Red bar from Oct 01 to Oct 09]				
WD-C3132	Sec VID - Install ballast tanks inside precast box I and internal strut S2	10	10-Oct-16	19-Oct-16	-178	[Red bar from Oct 10 to Oct 19]				
WDII Box 1 ELS										
WD-C3998	Sec VIC - Install middle strut S2 at -6.5mPD	14	30-Aug-16 A	13-Sep-16	-179	[Red bar from Sep 13 to Sep 13]				
WD-C4060	Sec VIC - Excavation of rock fill down to -11.5mPD	8	14-Sep-16	21-Sep-16	-179	[Red bar from Sep 14 to Sep 21]				
WD-C4070	Sec VIC - Install waling WB4 at -10.6mPD	7	22-Sep-16	28-Sep-16	-179	[Red bar from Sep 22 to Sep 28]				
WD-C4080	Sec VIC - 3rd Layer of Strut	9	29-Sep-16	07-Oct-16	-179	[Red bar from Sep 29 to Oct 07]				
WD-C4120	Sec VIC - Joint Survey of excavated level	2	08-Oct-16	09-Oct-16	-179	[Red bar from Oct 08 to Oct 09]				
WD-C4140	Sec VIC - Tremie concrete at bottom level	5	10-Oct-16	14-Oct-16	-179	[Red bar from Oct 10 to Oct 14]				
WD-C4160	Sec VIC - Joint Survey of concrete level	2	15-Oct-16	16-Oct-16	-179	[Red bar from Oct 15 to Oct 16]				
WD-C4180	Sec VIC - Remove Strut S2	2	17-Oct-16	18-Oct-16	-179	[Red bar from Oct 17 to Oct 18]				
WD-C4190	Sec VIC - Cut bored pile casing	2	19-Oct-16	20-Oct-16	-179	[Red bar from Oct 19 to Oct 20]				
WDII Box 1 Bottom Slab										
WD-C5040	Sec VI D - tow bottom slab to position	2	21-Oct-16	22-Oct-16	-179	[Red bar from Oct 21 to Oct 22]				
WDII Box 1 Remaining Structure										
WD-C6040	Sec VID - Concreting Wall 12, 13, 15 & 16 and Wall BH	4	23-Oct-16	26-Oct-16	-179	[Red bar from Oct 23 to Oct 26]				
WD-C6060	Sec VID - Construct roof slab	10	27-Oct-16	05-Nov-16	-179	[Red bar from Oct 27 to Nov 05]				
WD-C6080	Sec VID - Extension of sacrificial wall (2.3m)	17	06-Nov-16	22-Nov-16	-179	[Red bar from Nov 06 to Nov 22]				
WD-C6100	Sec VID - Balasting and final sink Box 1 to -10.0mPD	3	23-Nov-16	25-Nov-16	-179	[Red bar from Nov 23 to Nov 25]				
WD-C6120	Sec VID - Constrcut remaining roof slab	8	26-Nov-16	03-Dec-16	-179	[Red bar from Nov 26 to Dec 03]				
WD-C6140	Sec VID - Backfilling lean concreting to -6.5mPD	3	04-Dec-16	06-Dec-16	-179	[Red bar from Dec 04 to Dec 06]				
WD-C6160	Sec VID - Remove ELS and cut off pipe pile head	16	07-Dec-16	22-Dec-16	-179	[Red bar from Dec 07 to Dec 22]				
Section IV - Slip Road 3										
Roadwork & Utilities (Lung King Street)										
SIV11000	Sec IV - Stage 1: Roadwork & Utilities (MH1.2 to MH1.3)	1	09-May-16 A	31-Aug-16	-64	[Red bar from May 09 to Aug 31]				
SIV11020	Sec IV - Stage 2: Roadwork & Utilities (MH1.3 to MH1.4)	31	01-Sep-16	08-Oct-16	-64	[Red bar from Sep 01 to Oct 08]				
SIV11060	Sec IV - Stage 3: Roadwork & Utilities (MH1.4 to MH1.5)	13	11-Oct-16	25-Oct-16	-64	[Red bar from Oct 11 to Oct 25]				
Section VII - Remainder Works										
Retaining Wall RW5 Construction										
SVII10660	Sec VII - Retaining Wall RW5 (bay 1) - construct base slab and wall	18	07-Nov-16	26-Nov-16	-18	[Red bar from Nov 07 to Nov 26]				
SVII10680	Sec VII - Retaining wall RW5 (bay 2) - construct base slab and wall	18	28-Nov-16	17-Dec-16	-18	[Red bar from Nov 28 to Dec 17]				
SVII10800	Sec VII - Retaining wall RW5 (bay 3) - construct base slab and wall	18	07-Nov-16	26-Nov-16	-18	[Red bar from Nov 07 to Nov 26]				
SVII10820	Sec VII - Retaining wall RW5 (bay 4) - construct base slab and wall	18	28-Nov-16	17-Dec-16	-18	[Red bar from Nov 28 to Dec 17]				
Landing Steps Construction										
Landing Steps BSW13										
SVII10700	Sec VII - Landing steps (BSW13) - construct mass concrete coping	26	05-Dec-16	06-Jan-17	-28	[Red bar from Dec 05 to Jan 06]				
Landing Steps BSW4										
SVII10940	Sec VII - Landing steps (BSW4) - construct mass concrete coping	26	05-Dec-16	06-Jan-17	-28	[Red bar from Dec 05 to Jan 06]				



Activity ID	Activity Name	Remaining Dur	Early Start	Early Finish	Total Float	2016					2017	
						Sep	Oct	Nov	Dec	Jan		
Landing Steps BSW5												
SVIII1020	Sec VII - Landing steps (BSW5) - construct mass concrete coping	26	05-Dec-16	06-Jan-17	-24							
Landing Steps BSW9												
SVIII1100	Sec VII - Landing steps (BSW9) - construct mass concrete coping	24	05-Dec-16*	04-Jan-17	-21							
Promenade Seawall Parapet Construction												
SVII10400	Sec VII - construct block seawall mass concrete coping & backfill to pavement formation	90	03-Oct-16*	19-Jan-17	-9							
SVII10600	Sec VII - construct seawall parapet (Zone A1, A2 & B)	90	13-Dec-16	05-Apr-17	-9							
Section VIII - Landscape Softworks												
Soft Landscaping Works												
SVIII10040	Sec VIII - Trees Planting	163	31-Aug-16	20-Mar-17	0							
Section X - Protection & Preservation of Trees												
Soft Landscaping Works												
SX10020	Sec X - Protection & Preservation of Trees	326	31-Jan-13 A	22-Jul-17	0							
VO : Construction of Box 4A & 4B												
Box 4A												
4A10000	Concrete Fill with 300 dia. carrier drain (Approx. 50m)	16	26-Sep-16*	11-Oct-16	-152							
4A10020	Internal Suspended Slab & Internal Wall	24	30-Sep-16	23-Oct-16	-152							
Box 4B												
4B10000	Concrete Fill with 300 dia. carrier drain (Approx. 50m)	16	12-Oct-16	27-Oct-16	-144							
4B10010	Internal Suspended Slab & Internal Wall	24	24-Oct-16	16-Nov-16	-152							

Activity ID	Activity Name	Original Duration	Start	Finish	2016			
					Jun	Jul	Aug	Sep
Total		1471d	21-Mar-13 A	14-Dec-17				
DWP-06 (A) - Update Progress As of 20 Jun 16		1471d	21-Mar-13 A	14-Dec-17				
Key Dates		71d	25-May-16 A	29-Aug-16				
Stage / Section Completion of Works (Contractual Date up to EOT-10)		44d	20-Jun-16	03-Aug-16				
KD02C	KD2 - Achievement of Stage 2 (994d) (Plus 6 day EOT)	0d		20-Jun-16*	◆ KD2 - Achievement of Stage 2 (994d) (Plus 6 day EOT)			
KD06C	KD6 - completion of Section 3 of the Works (1125d) (plus 5 days EOT)	0d		20-Jun-16*	◆ KD6 - completion of Section 3 of the Works (1125d) (plus 5 days EOT)			
KD14C	KD14 - Completion of Section 8 of the Works (1125d)	0d		20-Jun-16*	◆ KD14 - Completion of Section 8 of the Works (1125d)			
KD12C	KD12 - Completion of Section 7B of the Works (1214d) (Plus 1 day EOT)	0d		17-Jul-16*	◆ KD12 - Completion of Section 7B of the Works (1214d) (Plus 1 day EOT)			
KD07C	KD7 - Completion of Section 4 of the Works (1226d) (Plus 6 day EOT)	0d		03-Aug-16*	◆ KD7 - Completion of Section 4 of the Works (1226d) (Plus 6 day EOT)			
Stage / Section Completion of Works (Programmed Date)		27d	25-May-16 A	17-Jul-16				
KD2	KD2 - Achievement of Stage 2 (994d) (Plus 5 day EOT)	0d		25-May-16 A	◆ KD2 - Achievement of Stage 2 (994d) (Plus 5 day EOT)			
KD12	KD12 - Completion of Section 7B of the Works (1214d)	0d		17-Jul-16	◆ KD12 - Completion of Section 7B of the Works (1214d)			
Handover Dates (Contractual Date up to EOT-10)		71d	20-Jun-16	29-Aug-16				
HXVC	Handover of Portion XV	0d		20-Jun-16*	◆ Handover of Portion XV			
HVIC	Handover of Portion VI	0d		20-Jun-16*	◆ Handover of Portion VI			
HVIC	Handover of Portion VII	0d		20-Jun-16*	◆ Handover of Portion VII			
HIVBC	Handover of Portion IVB	0d		20-Jun-16*	◆ Handover of Portion IVB			
HIIIC	Handover of Portion III	0d		20-Jun-16*	◆ Handover of Portion III			
HVBC	Handover of Portion VB	0d		20-Jun-16*	◆ Handover of Portion VB			
HXIIIBC	Handover of Portion XIIIB	0d		29-Aug-16*	◆ Handover of Portion XIIIB			
HIBC	Handover of Portion IB	0d		29-Aug-16*	◆ Handover of Portion IB			
Handover Dates (Programmed Date)		0d	20-Jun-16	20-Jun-16				
HVI	Handover of Portion VI	0d		20-Jun-16	◆ Handover of Portion VI			
HVII	Handover of Portion VII	0d		20-Jun-16	◆ Handover of Portion VII			
HXV	Handover of Portion XV	0d		20-Jun-16	◆ Handover of Portion XV			
HIII	Handover of Portion III	0d		20-Jun-16	◆ Handover of Portion III			
Works in TS3		328d	17-Sep-15 A	29-Oct-16				
Works in TS3-East		213d	16-Jan-16 A	05-Oct-16				
Cut & Cover Tunnel Structure		6d	16-Jan-16 A	24-Jun-16 A				
TS3-East CCT - Ch.4500.000 to Ch.4582.140		6d	16-Jan-16 A	24-Jun-16 A				
TS3 East CCT - Roof Slab Waterproofing + Screeding		6d	16-Jan-16 A	24-Jun-16 A				
TS3E_6820	TS3(E) Waterproofing to Roof Slab - Bay 1 & Bay 5	6d	16-Jan-16 A	24-Jun-16 A	TS3(E) Waterproofing to Roof Slab - Bay 1 & Bay 5			
Removal of Reclamation		90d	25-May-16 A	05-Oct-16				
TS3E_7630	Achievement of KD2 - Remaining Removal Works for Stage 2	0d		25-May-16 A	2 - Remaining Removal Works for Stage 2			
TS3E_8010	Remove Bulkhead between TS3E & TZ2	90d	28-May-16 A	05-Oct-16				
Works in TS3-West		328d	17-Sep-15 A	29-Oct-16				
ELS & Rock Excavation		252d	17-Sep-15 A	29-Jul-16				
ELS Fabrication Works		75d	17-Sep-15 A	22-May-16 A				
TS3W_4510	ELS struts & waling fabrication	75d	17-Sep-15 A	22-May-16 A	ation			
TS3-West ELS Works		34d	02-May-16 A	29-Jul-16				
Layer 6		6d	02-May-16 A	27-May-16 A				
TS3W_8660	East Side Layer 6: Struts installation	6d	02-May-16 A	27-May-16 A	6: Struts installation			
TS3W_8680	West Side Layer 6: Struts installation	6d	04-May-16 A	24-May-16 A	ruts installation			

- Actual Work
- Remaining Work
- Critical Remaining Work
- Milestone

Page 1 of 17

Contract No. HY/2010/08: Central - Wanchai Bypass Tunnel +(Slip Road 8 Section) - 3 Months Rolling Programme

Date	Revision	Checked	Approved
20-Jun-16	Updated to 20th Jun 2016	DML/WC	

Activity ID	Activity Name	Original Duration	Start	Finish	2016				
					Jun	Jul	Aug	Sep	
Layer 7									
TS3W_8690	East Side Layer 7: Soft excavation	5d	11-May-16 A	30-May-16 A	Layer 7: Soft excavation				
TS3W_8710	West Side Layer 7: Soft excavation	5d	11-May-16 A	01-Jun-16 A	Side Layer 7: Soft excavation				
TS3W_8720	West Side Layer 7: Struts installation	6d	19-May-16 A	23-Jun-16	West Side Layer 7: Struts installation				
TS3W_8700	East Side Layer 7: Struts installation	6d	20-May-16 A	07-Jun-16 A	East Side Layer 7: Struts installation				
Layer 8									
TS3W_8730	East Side Layer 8: Soft excavation	5d	26-May-16 A	07-Jun-16 A	East Side Layer 8: Soft excavation				
TS3W_8750	West Side Layer 8: Soft excavation	5d	01-Jun-16 A	24-Jun-16	West Side Layer 8: Soft excavation				
TS3W_8740	East Side Layer 8: Struts installation	6d	05-Jun-16 A	16-Jun-16 A	East Side Layer 8: Struts installation				
TS3W_8760	West Side Layer 8: Struts installation	6d	24-Jun-16	30-Jun-16	West Side Layer 8: Struts installation				
Formation Level									
TS3W_8770	East Side Soft Excavation to Formation	5d	20-Jun-16	24-Jun-16	East Side Soft Excavation to Formation				
TS3W_8800	East Side - Commence Blinding (Zone A & Zone B)	0d	25-Jun-16		East Side - Commence Blinding (Zone A & Zone B)				
TS3W_8780	West Side Soft Excavation to Formation	4d	02-Jul-16	06-Jul-16	West Side Soft Excavation to Formation				
TS3W_8790	West Side Rock Excavation to Formation	6d	07-Jul-16	13-Jul-16	West Side Rock Excavation to Formation				
TS3W_8810	Remaining barrettes (4 Nos.) Constructed by Open Cut	16d	14-Jul-16	29-Jul-16	Remaining barrettes (4 Nos.) Constructed by Open Cut				
TS3W_8820	West Side - Commence Blinding (Zone C & Zone D)	0d	25-Jul-16		West Side - Commence Blinding (Zone C & Zone D)				
SR8 at TS3W Junction ELS Works									
A69810	Remove Bulkhead between TS3W & SR8	30d	20-Jun-16	25-Jul-16	Remove Bulkhead between TS3W & SR8				
Formation Level									
TS3W_8940	Commence Blinding Concrete	0d	20-May-16 A	20-May-16 A					
Cut & Cover Tunnel Structure									
TS3W_2180	Remove Bulkhead between TS3W & TS3E	90d	14-Jul-16	29-Oct-16					
Method Statement									
TS3W_2135	(01)RC works method statement - submission	24d	25-May-16 A	25-May-16 A	Method statement - submission				
TS3W_2140	(01)RC works method statement - review and approval by AECOM	24d	20-Jun-16	18-Jul-16	(01)RC works method statement - review and approval by AECOM				
TS3-West CCT									
Zone A (Type 4) - Bay 1 to Bay 2									
Blinding + Waterproofing to Bay 1 to Bay 2									
TS3W_5620.20	TS3(W) - Waterproofing Bay 1- Bay 2	2d	28-Jun-16	29-Jun-16	TS3(W) - Waterproofing Bay 1- Bay 2				
TS3W_5620.10	TS3(W) CCT Blinding - Bay 1-2	2d	11-Jul-16 A	27-Jun-16					
Base Slab - Bay 1 to Bay 2									
TS3W_5760	TS3(W) Base Slab + Drainage - Bay 1 (Eastbound & Westbound)	6d	30-Jun-16	06-Jul-16	TS3(W) Base Slab + Drainage - Bay 1 (Eastbound & Westbound)				
TS3W_5765	TS3(W) Base Slab + Drainage - Bay 2 (Eastbound & Westbound)	6d	07-Jul-16	13-Jul-16	TS3(W) Base Slab + Drainage - Bay 2 (Eastbound & Westbound)				
Concrete Strut between Base Slab									
A7630	Concrete Strut between Base Slab of Est & West Bound - Bay 1	1d	07-Jul-16	07-Jul-16	Concrete Strut between Base Slab of Est & West Bound - Bay 1				
A7640	Concrete Strut between Base Slab of Est & West Bound - Bay 2	1d	14-Jul-16	14-Jul-16	Concrete Strut between Base Slab of Est & West Bound - Bay 2				
Removal of Waling & Lateral Struts - Layer SL5 & SL6									
TS3W_6536	TS3(W) Layer 5&6: Removal of waling & lateral struts Bay 1	2d	08-Jul-16	09-Jul-16	TS3(W) Layer 5&6: Removal of waling & lateral struts Bay 1				
TS3W_6537	TS3(W) Layer 5&6 / 6&7: Removal of waling & lateral struts Bay 2	2d	15-Jul-16	16-Jul-16	TS3(W) Layer 5&6 / 6&7: Removal of waling & lateral struts Bay 2				
Walls - Bay 1 to Bay 2									
TS3W_5950	TS3(W) Intermediate Walls - Bay 1	5d	11-Jul-16	15-Jul-16	TS3(W) Intermediate Walls - Bay 1				
TS3W_5954	TS3(W) Intermediate Walls - Bay 2	5d	18-Jul-16	22-Jul-16	TS3(W) Intermediate Walls - Bay 2				
OHVD - Bay 1 to Bay 2									

- Actual Work
- Remaining Work
- Critical Remaining Work
- ◆ Milestone

Date	Revision	Checked	Approved
20-Jun-16	Updated to 20th Jun 2016	DML/WC	

Activity ID	Activity Name	Original Duration	Start	Finish	2016			
					Jun	Jul	Aug	Sep
TS3W_6200	TS3(W) Overhead Ventilation Duct (OVHD) - Bay 1	5d	16-Jul-16	21-Jul-16			■ TS3(W) Overhead Ventilation Duct (OVHD) - Bay 1	
TS3W_6210	TS3(W) Overhead Ventilation Duct (OVHD) - Bay 2	5d	23-Jul-16	28-Jul-16			■ TS3(W) Overhead Ventilation Duct (OVHD) - Bay 2	
Roof Slab - Bay 1 to Bay 2		16d	22-Jul-16	09-Aug-16				
TS3W_6390	TS3(W) Roof Slab - Bay 1	8d	22-Jul-16	30-Jul-16			■ TS3(W) Roof Slab - Bay 1	
TS3W_6400	TS3(W) Roof Slab - Bay 2	8d	01-Aug-16	09-Aug-16			■ TS3(W) Roof Slab - Bay 2	
Roof Waterproofing + Screeding - Bay 1 to Bay 2		10d	10-Aug-16	20-Aug-16				
TS3W_6530	Install Wall Waterproofing membrane - Bay 1 - 2	4d	10-Aug-16	13-Aug-16			■ Install Wall Waterproofing membrane - Bay 1 - 2	
TS3W_8960	TS3(W) Waterproofing to Roof Slab - Bay 1 & Bay 2	4d	15-Aug-16	18-Aug-16			■ TS3(W) Waterproofing to Roof Slab - Bay 1 & Bay 2	
TS3W_8970	TS3(W) Screeding to Roof Slab - Bay 1 & Bay 2	2d	19-Aug-16	20-Aug-16			■ TS3(W) Screeding to Roof Slab - Bay 1 & Bay 2	
Re-prop for Layer 6		4d	22-Aug-16	25-Aug-16				
A7650	Re-prop of Layer 6 for Bay 1	2d	22-Aug-16	23-Aug-16			■ Re-prop of Layer 6 for Bay 1	
A7660	Re-prop of Layer 6 for Bay 2	2d	24-Aug-16	25-Aug-16			■ Re-prop of Layer 6 for Bay 2	
Load Transfer to Roof for King Post		14d	24-Aug-16	08-Sep-16				
A7550	Load Transfer to Roof Slab - Bay 1	7d	24-Aug-16	31-Aug-16			■ Load Transfer to Roof Slab - Bay 1	
A7560	Load Transfer to Roof Slab - Bay 2	7d	01-Sep-16	08-Sep-16			■ Load Transfer to Roof Slab - Bay 2	
Remove K-post inside CCT Structure		9d	01-Sep-16	10-Sep-16				
A7690	Remove King Post - Bay 1	2d	01-Sep-16	02-Sep-16			■ Remove King Post - Bay 1	
A7700	Remove King Post - Bay 2	2d	09-Sep-16	10-Sep-16			■ Remove King Post - Bay 2	
Backfill & Remove SL4		11d	03-Sep-16	15-Sep-16				
A7670	Backfill to -12.5mPD & Remove Strut SL4 - Bay 1	4d	03-Sep-16	07-Sep-16			■ Backfill to -12.5mPD & Remove SL4 - Bay 1	
A7680	Backfill to -12.5mPD & Remove Strut SL4 - Bay 2	4d	12-Sep-16	15-Sep-16			■ Backfill to -12.5mPD & Remove SL4 - Bay 2	
Commence Removal of Reclamation - Backfill & Remove SL3		0d	17-Sep-16	17-Sep-16				
A7580	Earliest Commencement of Removal of Reclamation for Bay 1 - 2	0d	17-Sep-16				◆ Earliest Commencement of Removal of Reclamation for Bay 1 - 2	
Remove K-post, SL8 & Re-prop of SL6		9d	03-Sep-16	13-Sep-16				
A7600	Remove SL7 inside CCT Structure (RE-prop of SL6 Left in the Backfilling) - Bay 1	2d	03-Sep-16	05-Sep-16			■ Remove SL7 inside CCT Structure (RE-prop of SL6 Left in the Backfilling) - Bay 1	
A7710	Remove SL7 inside CCT Structure (RE-prop of SL6 Left in the Backfilling) - Bay 2	2d	12-Sep-16	13-Sep-16			■ Remove SL7 inside CCT Structure (RE-prop of SL6 Left in the Backfilling) - Bay 2	
Commence Utility Trough		0d	14-Sep-16	14-Sep-16				
A7610	Earliest Commencement of Utility Trough - Bay 1 - 2	0d	14-Sep-16				◆ Earliest Commencement of Utility Trough - Bay 1 - 2	
Zone B (Type 3) - Bay 3		69d	25-Jun-16	15-Sep-16				
TS3(W) - CCT Structure		46d	25-Jun-16	18-Aug-16				
TS3W_5670	TS3(W) CCT Blinding - Bay 3	1d	25-Jun-16	25-Jun-16		■ TS3(W) CCT Blinding - Bay 3		
TS3W_5680	TS3(W) - Waterproofing Bay 3	2d	27-Jun-16	28-Jun-16		■ TS3(W) - Waterproofing Bay 3		
TS3W_5690	TS3(W) Base Slab + Drainage - Bay 3	6d	14-Jul-16	20-Jul-16		■ TS3(W) Base Slab + Drainage - Bay 3		
TS3W_5700	TS3(W) Concrete Strut - Bay 3	1d	21-Jul-16	21-Jul-16		■ TS3(W) Concrete Strut - Bay 3		
TS3W_5710	TS3(W) Layer 6&7: Removal of waling & lateral struts Bay 3	2d	22-Jul-16	23-Jul-16		■ TS3(W) Layer 6&7: Removal of waling & lateral struts Bay 3		
TS3W_5960	TS3(W) Intermediate Walls - Bay 3	5d	26-Jul-16	30-Jul-16		■ TS3(W) Intermediate Walls - Bay 3		
TS3W_6220	TS3(W) Overhead Ventilation Duct (OVHD) - Bay 3	5d	01-Aug-16	05-Aug-16		■ TS3(W) Overhead Ventilation Duct (OVHD) - Bay 3		
TS3W_6410	TS3(W) Roof Slab - Bay 3	8d	10-Aug-16	18-Aug-16		■ TS3(W) Roof Slab - Bay 3		
Preparation Prior to Removal of Reclamation		14d	30-Aug-16	15-Sep-16				
TS3W_6411	TS3(W) Waterproofing to Wall & Roof Slab - Bay 3	2d	30-Aug-16	31-Aug-16			■ TS3(W) Waterproofing to Wall & Roof Slab - Bay 3	
TS3W_6413	TS3(W) Re-prop of Layer 6 for Bay 4	2d	01-Sep-16	02-Sep-16			■ TS3(W) Re-prop of Layer 6 for Bay 4	
TS3W_6412	TS3(W) Screeding to Roof Slab - Bay 3	1d	01-Sep-16	01-Sep-16			■ TS3(W) Screeding to Roof Slab - Bay 3	
TS3W_6414	TS3(W) Backfill & Remove SL5	4d	03-Sep-16	07-Sep-16			■ TS3(W) Backfill & Remove SL5	
TS3W_6414A	TS3(W) Backfill & Remove SL4	4d	08-Sep-16	12-Sep-16			■ TS3(W) Backfill & Remove SL4	

- Actual Work
- Remaining Work
- Critical Remaining Work
- ◆ Milestone

Date	Revision	Checked	Approved
20-Jun-16	Updated to 20th Jun 2016	DML/WC	

Activity ID	Activity Name	Original Duration	Start	Finish	2016			
					Jun	Jul	Aug	Sep
TS3W_6415	Earliest Commencement of Removal of Reclamation for Bay 3	0d	13-Sep-16					◆ Earliest Commencement
TS3W_6416	Remove SL8 inside CCT Structure & Remove Re-prop SL6	2d	13-Sep-16	14-Sep-16				■ Remove SL8 inside CCT
TS3W_6417	Earliest Commencement of Utility Trough - Bay 3	0d	15-Sep-16					◆ Earliest Commencement
Cross Passage and Egress Passage (CP31/EP02)		43d	01-Aug-16	19-Sep-16				
Cross Passage CP31		25d	01-Aug-16	29-Aug-16				
TS3W_7890	TS3(W) Cross Passage CP31 - Blinding + Waterproofing	4d	01-Aug-16	04-Aug-16				■ TS3(W) Cross Passage CP31 - Blinding + Waterproofing
TS3W_7900	TS3(W) Cross Passage CP31 - Base Slab + Drainage	5d	05-Aug-16	10-Aug-16				■ TS3(W) Cross Passage CP31 - Base Slab + Drainage
TS3W_7910	TS3(W) Cross Passage CP31 - Walls	6d	11-Aug-16	17-Aug-16				■ TS3(W) Cross Passage CP31 - Walls
TS3W_7920	TS3(W) Cross Passage CP31 - Roof Slab	7d	18-Aug-16	25-Aug-16				■ TS3(W) Cross Passage CP31 - Roof Slab
TS3W_7930	TS3(W) Cross Passage CP31 - Waterproofing Membrane + Screeding	3d	26-Aug-16	29-Aug-16				■ TS3(W) Cross Passage CP31 - Waterproofing Membrane + Screeding
Egress Passage EP-02		43d	01-Aug-16	19-Sep-16				
TS3W_7940	TS3(W) Egress Passage EP02 - Blinding + Waterproofing for Base Slab	4d	01-Aug-16	04-Aug-16				■ TS3(W) Egress Passage EP02 - Blinding + Waterproofing for Base Slab
Stair Well		33d	05-Aug-16	12-Sep-16				
TS3W_7950	TS3(W) Egress Passage EP02 Stairwell & Passage Gallery - Base Slab	5d	05-Aug-16	10-Aug-16				■ TS3(W) Egress Passage EP02 Stairwell & Passage Gallery - Base Slab
TS3W_7960	TS3(W) Egress Passage EP02 Stairwell - Walls upto -21.32 mPD	5d	12-Aug-16	17-Aug-16				■ TS3(W) Egress Passage EP02 Stairwell - Walls upto -21.32 mPD
TS3W_7960A	TS3(W) Egress Passage EP02 Stairwell - Floor Slab and Stair Case	6d	18-Aug-16	24-Aug-16				■ TS3(W) Egress Passage EP02 Stairwell - Floor Slab and Stair Case
TS3W_7960B	TS3(W) Egress Passage EP02 Stairwell - Walls upto Roof Soffit	5d	25-Aug-16	30-Aug-16				■ TS3(W) Egress Passage EP02 Stairwell - Walls upto Roof Soffit
TS3W_7965	TS3(W) Egress Passage EP02 Stairwell - Roof Slab	6d	31-Aug-16	06-Sep-16				■ TS3(W) Egress Passage EP02 Stairwell - Roof Slab
TS3W_7985	TS3(W) Egress Passage EP02 to SR8 - Stairs	5d	07-Sep-16	12-Sep-16				■ TS3(W) Egress Passage EP02 to SR8 - Stairs
Lower Part of Egress Passage Gallery		11d	25-Aug-16	06-Sep-16				
TS3W_7980	TS3(W) Egress Passage EP02 to SR8 - Walls Structure	5d	25-Aug-16	30-Aug-16				■ TS3(W) Egress Passage EP02 to SR8 - Walls Structure
TS3W_7990	TS3(W) Egress Passage EP02 to SR8 Roof Slab	6d	31-Aug-16	06-Sep-16				■ TS3(W) Egress Passage EP02 to SR8 Roof Slab
Upper Egress Passage EP-02 on top of CCT Jointing to SR8		11d	07-Sep-16	19-Sep-16				
TS3W_8170	TS3(W) Egress Passage EP02 to SR8 Access Well - Walls Structure	5d	07-Sep-16	12-Sep-16				■ TS3(W) Egress Passage EP02 to SR8 Access Well - Walls Structure
TS3W_8180	TS3(W) Egress Passage EP02 to SR8 Access Well - Roof slab	6d	13-Sep-16	19-Sep-16				■ TS3(W) Egress Passage EP02 to SR8 Access Well - Roof slab
Zone C (Type 2) - Bay 4 to Bay 7		77d	25-Jun-16	24-Sep-16				
Blinding + Waterproofing to Bay 4 to Bay 7		8d	25-Jun-16	04-Jul-16				
TS3W_5620.30	TS3(W) CCT Blinding - Bay 4- Bay 7	4d	25-Jun-16	29-Jun-16				■ TS3(W) CCT Blinding - Bay 4- Bay 7
TS3W_5620.40	TS3(W) - Waterproofing Bay 4- Bay 7	4d	30-Jun-16	04-Jul-16				■ TS3(W) - Waterproofing Bay 4- Bay 7
Base Slab - Bay 4 to Bay 7 (TS3W)		12d	05-Jul-16	18-Jul-16				
TS3W_8571	TS3(W) Base Slab + Drainage - Bay 4 Eastbound	6d	05-Jul-16	11-Jul-16				■ TS3(W) Base Slab + Drainage - Bay 4 Eastbound
TS3W_8575	TS3(W) Base Slab + Drainage - Bay 6 Eastbound	6d	05-Jul-16	11-Jul-16				■ TS3(W) Base Slab + Drainage - Bay 6 Eastbound
TS3W_8569	TS3(W) Base Slab + Drainage - Bay 4 Westbound	6d	05-Jul-16	11-Jul-16				■ TS3(W) Base Slab + Drainage - Bay 4 Westbound
TS3W_8574	TS3(W) Base Slab + Drainage - Bay 6 Westbound	6d	05-Jul-16	11-Jul-16				■ TS3(W) Base Slab + Drainage - Bay 6 Westbound
TS3W_8573	TS3(W) Base Slab + Drainage - Bay 5 Eastbound	6d	12-Jul-16	18-Jul-16				■ TS3(W) Base Slab + Drainage - Bay 5 Eastbound
TS3W_8572	TS3(W) Base Slab + Drainage - Bay 5 Westbound	6d	12-Jul-16	18-Jul-16				■ TS3(W) Base Slab + Drainage - Bay 5 Westbound
TS3W_8577	TS3(W) Base Slab + Drainage - Bay 7 Eastbound	6d	12-Jul-16	18-Jul-16				■ TS3(W) Base Slab + Drainage - Bay 7 Eastbound
TS3W_8576	TS3(W) Base Slab + Drainage - Bay 7 Westbound	6d	12-Jul-16	18-Jul-16				■ TS3(W) Base Slab + Drainage - Bay 7 Westbound
Concrete Strut - Bay 4 to Bay 7		7d	12-Jul-16	19-Jul-16				
A6980	TS3(W) Concrete Strut - Bay 4	1d	12-Jul-16	12-Jul-16				■ TS3(W) Concrete Strut - Bay 4
A7020	TS3(W) Concrete Strut - Bay 6	1d	12-Jul-16	12-Jul-16				■ TS3(W) Concrete Strut - Bay 6
A7000	TS3(W) Concrete Strut - Bay 5	1d	19-Jul-16	19-Jul-16				■ TS3(W) Concrete Strut - Bay 5
A7060	TS3(W) Concrete Strut - Bay 7	1d	19-Jul-16	19-Jul-16				■ TS3(W) Concrete Strut - Bay 7
Removal of Waling & Lateral Struts - Layer SL6 & SL7		8d	12-Jul-16	21-Jul-16				

- Actual Work
- Remaining Work
- Critical Remaining Work
- ◆ Milestone

Date	Revision	Checked	Approved
20-Jun-16	Updated to 20th Jun 2016	DML/WC	

Activity ID	Activity Name	Original Duration	Start	Finish	2016											
					Jun			Jul			Aug			Sep		
Intermediated Walls - Bay 8 to Bay 10																
TS3W_5820	TS3(W) Intermediate Walls - Bay 8 Westbound	5d	09-Aug-16	15-Aug-16	■ TS3(W) Intermediate Walls - Bay 8 Westbound											
TS3W_5830	TS3(W) Intermediate Walls - Bay 8 Eastbound	5d	09-Aug-16	15-Aug-16	■ TS3(W) Intermediate Walls - Bay 8 Eastbound											
TS3W_5860	TS3(W) Intermediate Walls - Bay 10 Westbound	5d	09-Aug-16	15-Aug-16	■ TS3(W) Intermediate Walls - Bay 10 Westbound											
TS3W_5870	TS3(W) Intermediate Walls - Bay 10 Eastbound	5d	09-Aug-16	15-Aug-16	■ TS3(W) Intermediate Walls - Bay 10 Eastbound											
TS3W_5840	TS3(W) Intermediate Walls - Bay 9 Westbound	5d	16-Aug-16	22-Aug-16	■ TS3(W) Intermediate Walls - Bay 9 Westbound											
TS3W_5850	TS3(W) Intermediate Walls - Bay 9 Eastbound	5d	16-Aug-16	22-Aug-16	■ TS3(W) Intermediate Walls - Bay 9 Eastbound											
Fill Void Between Walls Including Waterproofing on Wall - Bay 8 to Bay 10																
TS3W_6770	Fill the void underneath Bay 10 / SR8 - Bay S10	3d	15-Aug-16	18-Aug-16	■ Fill the void underneath Bay 10 / SR8 - Bay S10											
TS3W_6750	Fill the void underneath Bay 8 / SR8 - Bay S8	3d	01-Sep-16	05-Sep-16	■ Fill the void underneath Bay 8 / SR8 - Bay S8											
TS3W_6760	Fill the void underneath Bay 9 / SR8 - Bay S9	3d	01-Sep-16	05-Sep-16	■ Fill the void underneath Bay 9 / SR8 - Bay S9											
Base Slab - Bay S8 to Bay S10 (SR8)																
TS3W_6150	SR8 Base Slab - Bay S10	6d	18-Aug-16	25-Aug-16	■ SR8 Base Slab - Bay S10											
TS3W_6130	SR8 Base Slab - Bay S8	6d	05-Sep-16	12-Sep-16	■ SR8 Base Slab - Bay S8											
TS3W_6145	SR8 Base Slab - Bay S9	6d	12-Sep-16	19-Sep-16	■ SR8 Base Slab - Bay S9											
OHVD - Bay 8 to Bay 10 (TS3W)																
TS3W_6065	TS3(W) Overhead Ventilation Duct (OVHD) - Bay 10 Westbound	5d	25-Aug-16	31-Aug-16	■ TS3(W) Overhead Ventilation Duct (OVHD) - Bay 10 Westbound											
TS3W_6070	TS3(W) Overhead Ventilation Duct (OVHD) - Bay 10 Eastbound	5d	25-Aug-16	31-Aug-16	■ TS3(W) Overhead Ventilation Duct (OVHD) - Bay 10 Eastbound											
TS3W_6020	TS3(W) Overhead Ventilation Duct (OVHD) - Bay 8 Westbound	5d	12-Sep-16	17-Sep-16	■ TS3(W) Overhead Ventilation Duct (OVHD) - Bay 8 Westbound											
TS3W_6030	TS3(W) Overhead Ventilation Duct (OVHD) - Bay 8 Eastbound	5d	12-Sep-16	17-Sep-16	■ TS3(W) Overhead Ventilation Duct (OVHD) - Bay 8 Eastbound											
TS3W_6050	TS3(W) Overhead Ventilation Duct (OVHD) - Bay 9 Westbound	5d	19-Sep-16	24-Sep-16	■ TS3(W) Overhead Ventilation Duct (OVHD) - Bay 9 Westbound											
TS3W_6060	TS3(W) Overhead Ventilation Duct (OVHD) - Bay 9 Eastbound	5d	19-Sep-16	24-Sep-16	■ TS3(W) Overhead Ventilation Duct (OVHD) - Bay 9 Eastbound											
Roof Slab - Bay 8 to Bay 10 (TS3W)																
TS3W_9364	TS3(W) Roof Slab - Bay 10 Westbound	8d	22-Aug-16	31-Aug-16	■ TS3(W) Roof Slab - Bay 10 Westbound											
TS3W_9370	TS3(W) Roof Slab - Bay 10 Eastbound	8d	22-Aug-16	31-Aug-16	■ TS3(W) Roof Slab - Bay 10 Eastbound											
Waterproofing to Intermediated Walls - TS3W																
TS3W_9710	TS3(W) Waterproofing to Wall - Bay 10	2d	31-Aug-16	02-Sep-16	■ TS3(W) Waterproofing to Wall - Bay 10											
TS3W - Re-prop for Layer 6 Between Intermediated Wall																
A7120	TS3(W) Re-prop to Intermediated Walls for Layer 6 - Bay 10	2d	02-Sep-16	05-Sep-16	■ TS3(W) Re-prop to Intermediated Wall											
Removal of Struts - Layer SL4 & SL5																
A7150	TS3(W) Layer 4&5: Removal of waling & lateral struts Bay 10	4d	05-Sep-16	09-Sep-16	■ TS3(W) Layer 4&5: Removal of struts											
OHVD - Bay S8 to Bay S10 (SR8)																
TS3W_9410	SR8 Overhead Ventilation Duct (OVHD) - Bay S10	5d	09-Sep-16	15-Sep-16	■ SR8 Overhead Ventilation Duct (OVHD) - Bay S10											
Roof Slab - Bay S8 to Bay S10 (SR8)																
TS3W_9450	SR8 Roof Slab - Bay S10	8d	15-Sep-16	24-Sep-16	■ SR8 Roof Slab - Bay S10											
Cross Passage and Egress Passage (CP30/EP03)																
Cross Passage CP30																
Passage Crossing between Eastbound & Westbound at Bay 8																
TS3W_8130	TS3(W) Cross Passage CP30 - Base Slab + Drainage	6d	05-Aug-16	12-Aug-16	■ TS3(W) Cross Passage CP30 - Base Slab + Drainage											
TS3W_8140	TS3(W) Cross Passage CP30 - Walls	5d	15-Aug-16	20-Aug-16	■ TS3(W) Cross Passage CP30 - Walls											
TS3W_8150	TS3(W) Cross Passage CP30 - Roof Slab	6d	20-Aug-16	27-Aug-16	■ TS3(W) Cross Passage CP30 - Roof Slab											
TS3W_8160	TS3(W) Cross Passage CP30 - Waterproofing + Screeding	4d	27-Aug-16	01-Sep-16	■ TS3(W) Cross Passage CP30 - Waterproofing + Screeding											
Egress Passage EP-03																
TS3W_8020	TS3(W) Egress Passage EP03 - Waterproofing and Blinding for Base Slab	2d	27-Jul-16	29-Jul-16	■ TS3(W) Egress Passage EP03 - Waterproofing and Blinding for Base Slab											

- Actual Work
- Remaining Work
- Critical Remaining Work
- ◆ Milestone

Date	Revision	Checked	Approved
20-Jun-16	Updated to 20th Jun 2016	DML/WC	

Activity ID	Activity Name	Original Duration	Start	Finish	2016			
					Jun	Jul	Aug	Sep
Zone E (Type 1a) - Bay 11 to Bay 12		51d	25-Jul-16	23-Sep-16				
Blinding + Waterproofing to Bay 11 to Bay 12		4d	25-Jul-16	29-Jul-16				
TS3W_5510.10	Blinding Bay 11 to Bay 12	2d	25-Jul-16	27-Jul-16				
TS3W_5510.20	Waterproofing - Bay 11 to Bay 12	2d	27-Jul-16	29-Jul-16				
Base Slab - Bay 11 to Bay 12		12d	29-Jul-16	12-Aug-16				
TS3W_5520.10	TS3(W) Base Slab + Drainage - Bay 12 Westbound	6d	29-Jul-16	05-Aug-16				
TS3W_5520.20	TS3(W) Base Slab + Drainage - Bay 12 Eastbound	6d	29-Jul-16	05-Aug-16				
TS3W_5520.30	TS3(W) Base Slab + Drainage - Bay 11 Westbound	6d	05-Aug-16	12-Aug-16				
TS3W_5520.60	TS3(W) Base Slab + Drainage - Bay 11 Eastbound	6d	05-Aug-16	12-Aug-16				
Concrete Strut Between Base Slab		7d	05-Aug-16	13-Aug-16				
A7200	TS3(W) Concrete Strut - Bay 12 Between Eastbound & Westbound	1d	05-Aug-16	06-Aug-16				
A7210	TS3(W) Concrete Strut - Bay 11 Between Eastbound & Westbound	1d	12-Aug-16	13-Aug-16				
Removal of Waling & Lateral Struts Layer SL6 & SL7		8d	06-Aug-16	16-Aug-16				
TS3W_5530.70	Layer 6&7: Removal of waling & lateral struts - Bay 12	2d	06-Aug-16	09-Aug-16				
TS3W_5530.80	Layer 6&7: Removal of waling & lateral struts - Bay 11	2d	13-Aug-16	16-Aug-16				
Walls - Bay 11 to Bay 12		11d	09-Aug-16	22-Aug-16				
TS3W_5530	Walls - Bay 12 Westbound	5d	09-Aug-16	15-Aug-16				
TS3W_5531	Walls - Bay 12 Eastbound	5d	09-Aug-16	15-Aug-16				
TS3W_5532	Walls - Bay 11 Westbound	5d	16-Aug-16	22-Aug-16				
TS3W_5533	Walls - Bay 11 Eastbound	5d	16-Aug-16	22-Aug-16				
Fill Void Between Walls Including Waterproofing on Wall - Bay 11 to Bay 12		9d	15-Aug-16	25-Aug-16				
TS3W_5520.100	Install Waterproofing membrane & Fill Void Wall Bay 12	3d	15-Aug-16	18-Aug-16				
TS3W_5520.90	Install Waterproofing membrane & Fill Void Wall Bay 11	3d	22-Aug-16	25-Aug-16				
SR8 Base Slab - Bay S11 - 12		12d	18-Aug-16	01-Sep-16				
A7220	SR8 Base Slab + Drainage - Bay S12	6d	18-Aug-16	25-Aug-16				
A7230	SR8 Base Slab + Drainage - Bay S11	6d	25-Aug-16	01-Sep-16				
TS3(W) - OHVD - Bay 11 to Bay 12		11d	25-Aug-16	07-Sep-16				
TS3W_5540.10	TS3W OHVD Slab - Bay 12 Westbound	5d	25-Aug-16	31-Aug-16				
TS3W_5540.20	TS3W OHVD Slab - Bay 12 Eastbound	5d	25-Aug-16	31-Aug-16				
TS3W_5540.30	TS3W OHVD Slab - Bay 11 Westbound	5d	01-Sep-16	07-Sep-16				
TS3W_5540.35	TS3W OHVD Slab - Bay 11 Eastbound	5d	01-Sep-16	07-Sep-16				
Roof Slab - Bay 11 to Bay 12		16d	31-Aug-16	19-Sep-16				
TS3W_5550	Roof Slab - TS3W Bay 12 Westbound	8d	31-Aug-16	09-Sep-16				
TS3W_5552	Roof Slab - TS3W Bay 12 Eastbound	8d	31-Aug-16	09-Sep-16				
TS3W_5554	Roof Slab - TS3W Bay 11 Eastbound	8d	09-Sep-16	19-Sep-16				
TS3W_5553	Roof Slab - TS3W Bay 11 Westbound	8d	09-Sep-16	19-Sep-16				
TS3W - Re-prop for Layer 6 Between Intermediated Wall		11d	09-Sep-16	23-Sep-16				
A7240	TS3(W) Re-prop to Intermediated Walls for Layer 6 - Bay 12	4d	09-Sep-16	14-Sep-16				
A7250	TS3(W) Re-prop to Intermediated Walls for Layer 6 - Bay 11	4d	19-Sep-16	23-Sep-16				
Removal of Struts - Layer SL4 & SL5		4d	14-Sep-16	20-Sep-16				
A7260	TS3(W) Layer 4&5: Removal of waling & lateral struts Bay 12	4d	14-Sep-16	20-Sep-16				
Cable Trough Containment (TS3W)		9d	15-Sep-16	24-Sep-16				
TS3W_6510	TS3(W) Cable Through Bay 1-3	9d	15-Sep-16	24-Sep-16				
SR8 Junction at Sea Side		45d	20-Jun-16	11-Aug-16				

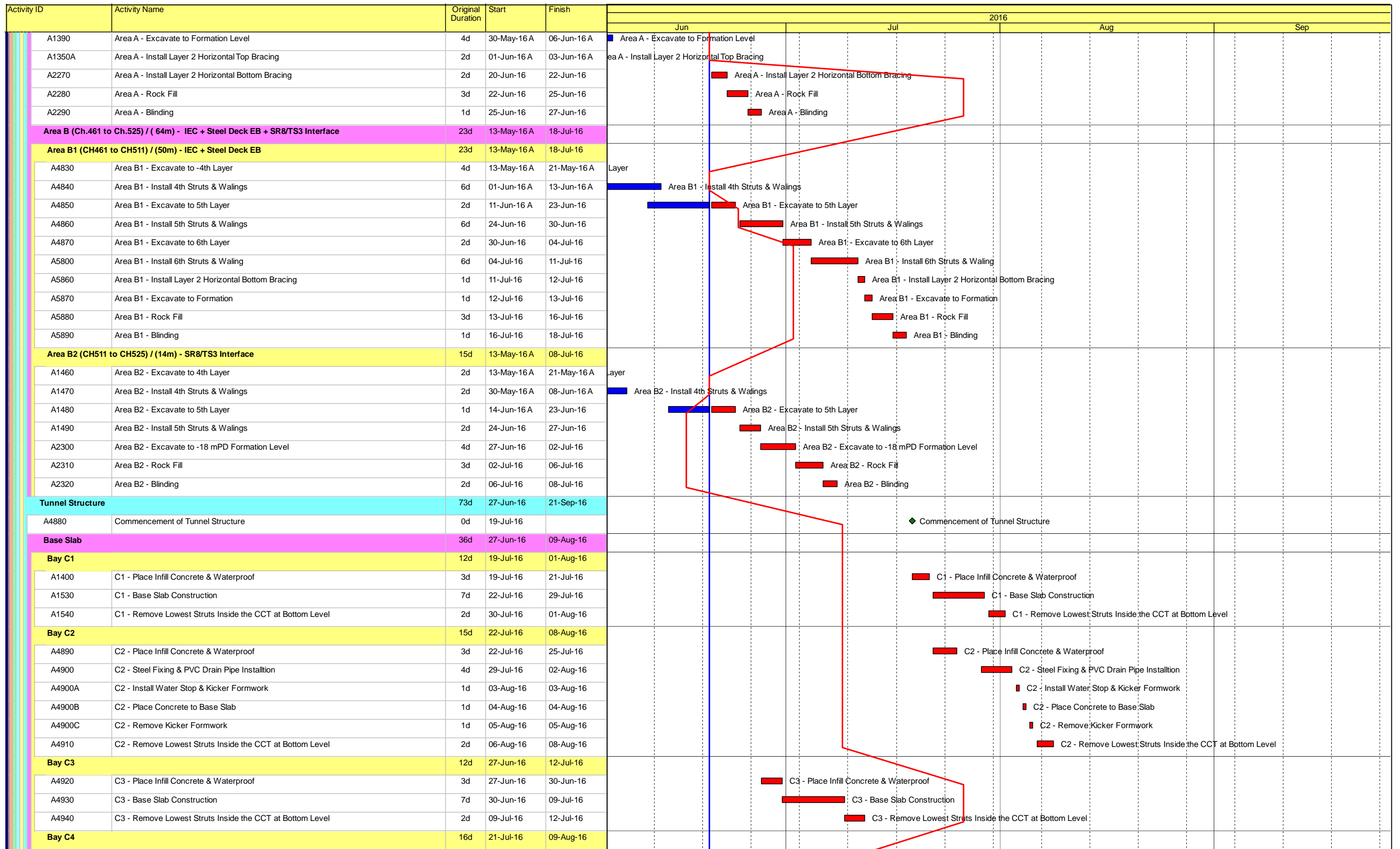
- Actual Work
- Remaining Work
- Critical Remaining Work
- ◆ Milestone

Date	Revision	Checked	Approved
20-Jun-16	Updated to 20th Jun 2016	DML/WC	

Activity ID	Activity Name	Original Duration	Start	Finish	2016				
					Jun	Jul	Aug	Sep	
Blinding + Waterproofing - Bay S1 to Bay S4b									
TS3W_7510	SR8 Blinding Bay S1 - S4b	4d	20-Jun-16	28-Jun-16		SR8 Blinding Bay S1 - S4b			
TS3W_7520	SR8 Waterproofing Bay S1 - S4b	4d	24-Jun-16	28-Jun-16		SR8 Waterproofing Bay S1 - S4b			
Base Slab - Bay S1 to Bay S4b									
TS3W_7540	SR8 Base Slab - Bay S2	6d	29-Jun-16	05-Jul-16		SR8 Base Slab - Bay S2			
TS3W_7570	SR8 Base Slab - Bay S4b	6d	29-Jun-16	06-Jul-16		SR8 Base Slab - Bay S4b			
TS3W_7530	SR8 Base Slab - Bay S1	6d	06-Jul-16	12-Jul-16		SR8 Base Slab - Bay S1			
TS3W_7550	SR8 Base Slab - Bay S3	6d	07-Jul-16	13-Jul-16		SR8 Base Slab - Bay S3			
Removal of Struts - Layer SL5									
TS3W_8520	SR8 - Layer 5: Removal of waling & lateral struts - Bay S2 (together with TS3W SL4)	2d	06-Jul-16	07-Jul-16		SR8 - Layer 5: Removal of waling & lateral struts - Bay S2 (together with TS3W SL4)			
TS3W_7560	SR8 - Layer 5: Removal of waling & lateral struts - Bay S1 (together with TS3W SL4)	2d	16-Jul-16	18-Jul-16		SR8 - Layer 5: Removal of waling & lateral struts - Bay S1 (together with TS3W SL4)			
TS3W_8530	SR8 - Layer 5: Removal of waling & lateral struts - Bay S3 (together with TS3W SL4)	2d	18-Jul-16	19-Jul-16		SR8 - Layer 5: Removal of waling & lateral struts - Bay S3 (together with TS3W SL4)			
TS3W_8540	SR8 - Layer 5: Removal of waling & lateral struts - Bay S4b (together with TS3W SL4)	2d	09-Aug-16	11-Aug-16			SR8 - Layer 5: Removal of waling & lateral struts - Bay S4b (together with TS3W SL4)		
Removal of Struts - Layer SL4									
A7730	SR8 - Layer 4: Removal of waling & lateral struts - Bay S2 (together with TS3W SL3)	2d	08-Jul-16	09-Jul-16		SR8 - Layer 4: Removal of waling & lateral struts - Bay S2 (together with TS3W SL3)			
A7720	SR8 - Layer 4: Removal of waling & lateral struts - Bay S1 (together with TS3W SL3)	2d	19-Jul-16	20-Jul-16		SR8 - Layer 4: Removal of waling & lateral struts - Bay S1 (together with TS3W SL3)			
A7740	SR8 - Layer 4: Removal of waling & lateral struts - Bay S3 (together with TS3W SL3)	2d	20-Jul-16	21-Jul-16		SR8 - Layer 4: Removal of waling & lateral struts - Bay S3 (together with TS3W SL3)			
OHVD - Bay S1 to Bay S4b									
TS3W_7710	SR8 OHVD - Bay S2	5d	11-Jul-16	15-Jul-16		SR8 OHVD - Bay S2			
TS3W_7700	SR8 OHVD - Bay S1	5d	21-Jul-16	26-Jul-16		SR8 OHVD - Bay S1			
Roof Slab - Bay S1 to Bay 4b									
TS3W_7790	SR8 Roof Slab - Bay S2	8d	20-Jul-16	28-Jul-16		SR8 Roof Slab - Bay S2			
TS3W_7780	SR8 Roof Slab - Bay S1	8d	30-Jul-16	08-Aug-16			SR8 Roof Slab - Bay S1		
Removal of Reclamation									
Method Statement									
TS3W_2150	(01) Removal of reclamation works method statement - submission	24d	20-Jun-16	18-Jul-16		(01) Removal of reclamation works method statement - submission			
TS3W_2155	(01) Removal of reclamation works method statement - review and approval by AECOM	24d	19-Jul-16	15-Aug-16			(01) Removal of reclamation works method statement - review and approval by AECOM		
TS3-West Removal of Reclamation									
Removal of waling and Struts at Layer 3									
TS3W_8510	Type 3 - Bay 3; Backfill & Remove Strut SL3	7d	13-Sep-16	21-Sep-16				Type 3	
Works in SR8 (Open Cut Method)									
SR8 - Cofferdam & Cut & Cover Tunnel Works									
SR8 (Zone C) - Ch. 528 to Ch. 368									
Pipe Piling & Dewatering Wells									
SR8 East Bound - (Seaside to Victoria Road / IEC Central Divider)									
Method Statement									
CCT Structure									
SR8_2290	CCT Structure Method statement - review and approval by AECOM	24d	20-Jun-16	18-Jul-16		CCT Structure Method statement - review and approval by AECOM			
ELS - Excavation & Struts Installation									
A2160	Completion of Partial ELS Works at Zone C - Area A	0d		27-Jun-16		Completion of Partial ELS Works at Zone C - Area A			
A1600	Completion of Whole ELS Works at Zone C	0d		18-Jul-16		Completion of Whole ELS Works at Zone C			
A2260	Completion of Partial ELS Works at Zone C - Area B	0d		18-Jul-16		Completion of Partial ELS Works at Zone C - Area B			
Area A (Ch.384 to Ch.461) / (77m) - Victoria Park to Steel Deck WB									
A1380	Area A - Install 5th Struts & Walings	12d	13-May-16 A	27-Jun-16 A		Area A - Install 5th Struts & Walings			

- █ Actual Work
- █ Remaining Work
- █ Critical Remaining Work
- ◆ Milestone

Date	Revision	Checked	Approved
20-Jun-16	Updated to 20th Jun 2016	DML/WC	



- Actual Work
- Remaining Work
- Critical Remaining Work
- ◆ Milestone

Date	Revision	Checked	Approved
20-Jun-16	Updated to 20th Jun 2016	DML/WC	

Activity ID	Activity Name	Original Duration	Start	Finish	2016			
					Jun	Jul	Aug	Sep
A6330	C5 - Concreting to Wall	1d	12-Aug-16	13-Aug-16				■ C5 - Concreting to Wall
A6340	C5 - Rebar to OHVD Slab & Hanger Wall	2d	13-Aug-16	16-Aug-16				■ C5 - Rebar to OHVD Slab & Hanger Wall
A6350	C5 - Formwork for Hanger Wall	1d	16-Aug-16	17-Aug-16				■ C5 - Formwork for Hanger Wall
A6360	C5 - Place Concrete to Hanger Wall & OHVD Slab	1d	17-Aug-16	18-Aug-16				■ C5 - Place Concrete to Hanger Wall & OHVD Slab
Roof Slab		45d	29-Jul-16	20-Sep-16				
Bay C1		17d	19-Aug-16	08-Sep-16				
A6370	C1 - Erect the Scaffolding & Soffit Fromwork on OHVD slab for Roof Slab Construction	3d	19-Aug-16	22-Aug-16				■ C1 - Erect the Scaffolding & Soffit Fromwork on OHVD slab for R
A6380	C1 - Rebar to Roof Slab	3d	23-Aug-16	25-Aug-16				■ C1 - Rebar to Roof Slab
A6390	C1 - External Formwork + End Shuttering & Water Proof for Roof	2d	26-Aug-16	27-Aug-16				■ C1 - External Formwork + End Shuttering & Water Proc
A6400	C1 - Place Concrete to Roof	1d	29-Aug-16	29-Aug-16				■ C1 - Place Concrete to Roof
A6410	C1 - 5 Days Early Strength of Roof for Removal of Propping	5d	30-Aug-16	03-Sep-16				■ C1 - 5 Days Early Strength of Roof for Rei
A6420	C1 - Remove Propping under Roof & OHVD Slab	3d	05-Sep-16	07-Sep-16				■ C1 - Remove Propping under Roo
A6430	C1 - Commence Load Transfer & Removal of Struts inside Structure	0d	08-Sep-16					◆ C1 - Commence Load Transfer &
Bay C2		14d	03-Sep-16	20-Sep-16				
A6440	C2 - Erect the Scaffolding & Soffit Fromwork on OHVD slab for Roof Slab Construction	3d	03-Sep-16	06-Sep-16				■ C2 - Erect the Scaffolding & Soffit Fr
A6450	C2 - Rebar to Roof Slab	3d	07-Sep-16	09-Sep-16				■ C2 - Rebar to Roof Slab
A6460	C2 - External Formwork + End Shuttering & Water Proof for Roof	2d	10-Sep-16	12-Sep-16				■ C2 - External Formwork
A6470	C2 - Place Concrete to Roof	1d	13-Sep-16	13-Sep-16				■ C2 - Place Concrete to
A6480	C2 - 5 Days Early Strength of Roof for Removal of Propping	5d	14-Sep-16	20-Sep-16				■ C2 - 5 Da
Bay C3		17d	29-Jul-16	18-Aug-16				
A3920	C3 - Erect the Scaffolding & Soffit Fromwork on OHVD slab for Roof Slab Construction	3d	29-Jul-16	02-Aug-16				■ C3 - Erect the Scaffolding & Soffit Fromwork on OHVD slab for Roof Slab Construction
A3930	C3 - Rebar to Roof Slab	3d	02-Aug-16	05-Aug-16				■ C3 - Rebar to Roof Slab
A3940	C3 - External Formwork + End Shuttering & Water Proof for Roof	2d	05-Aug-16	08-Aug-16				■ C3 - External Formwork + End Shuttering & Water Proof for Roof
A3950	C3 - Place Concrete to Roof	1d	08-Aug-16	09-Aug-16				■ C3 - Place Concrete to Roof
A3960	C3 - 5 Days Early Strength of Roof for Removal of Propping	5d	09-Aug-16	15-Aug-16				■ C3 - 5 Days Early Strength of Roof for Removal of Propping
A4070	C3 - Remove Propping under Roof & OHVD Slab	3d	15-Aug-16	18-Aug-16				■ C3 - Remove Propping under Roof & OHVD Slab
A4080	C3 - Commence Load Transfer & Removal of Struts inside Structure	0d	18-Aug-16					◆ C3 - Commence Load Transfer & Removal of Struts inside Structure
Bay C4		14d	02-Sep-16	20-Sep-16				
A6510	C4 - Erect the Scaffolding & Soffit Fromwork on OHVD slab for Roof Slab Construction	3d	02-Sep-16	06-Sep-16				■ C4 - Erect the Scaffolding & Soffit Fr
A6520	C4 - Rebar to Roof Slab	3d	06-Sep-16	09-Sep-16				■ C4 - Rebar to Roof Slab
A6530	C4 - External Formwork + End Shuttering & Water Proof for Roof	2d	09-Sep-16	12-Sep-16				■ C4 - External Formwork
A6540	C4 - Place Concrete to Roof	1d	12-Sep-16	13-Sep-16				■ C4 - Place Concrete to
A6550	C4 - 5 Days Early Strength of Roof for Removal of Propping	5d	13-Sep-16	20-Sep-16				■ C4 - 5 Da
Bay C5		17d	18-Aug-16	07-Sep-16				
A6580	C5 - Erect the Scaffolding & Soffit Fromwork on OHVD slab for Roof Slab Construction	3d	18-Aug-16	22-Aug-16				■ C5 - Erect the Scaffolding & Soffit Fromwork on OHVD slab for R
A6590	C5 - Rebar to Roof Slab	3d	22-Aug-16	25-Aug-16				■ C5 - Rebar to Roof Slab
A6600	C5 - External Formwork + End Shuttering & Water Proof for Roof	2d	25-Aug-16	27-Aug-16				■ C5 - External Formwork + End Shuttering & Water Proo
A6610	C5 - Place Concrete to Roof	1d	27-Aug-16	29-Aug-16				■ C5 - Place Concrete to Roof
A6620	C5 - 5 Days Early Strength of Roof for Removal of Propping	5d	29-Aug-16	03-Sep-16				■ C5 - 5 Days Early Strength of Roof for Rei
A6630	C5 - Remove Propping under Roof & OHVD Slab	3d	03-Sep-16	07-Sep-16				■ C5 - Remove Propping under Roo
A6640	C5 - Commence Load Transfer & Removal of Struts inside Structure	0d	07-Sep-16					◆ C5 - Commence Load Transfer & I
Load Transfer Works		28d	18-Aug-16	21-Sep-16				
Bay C3 (Involve 75% by Area)		14d	18-Aug-16	03-Sep-16				
A3210	C3 - Water Proffing to Roof Slab	3d	18-Aug-16	22-Aug-16				■ C3 - Water Proffing to Roof Slab

- Actual Work
- Remaining Work
- Critical Remaining Work
- ◆ Milestone

Date	Revision	Checked	Approved
20-Jun-16	Updated to 20th Jun 2016	DML/WC	

Activity ID	Activity Name	Original Duration	Start	Finish	2016			
					Jun	Jul	Aug	Sep
A5560A10	B2 - Remove Upper Struts inside Tunnel Box	4d	08-Jun-16 A	12-Jun-16 A	B2 - Remove Upper Struts inside Tunnel Box			
Bay B3 (CH351.8 to CH368)		4d	13-Jun-16 A	20-Jun-16 A				
A5590A10	B3 - Remove Upper Struts inside Tunnel Box	4d	13-Jun-16 A	20-Jun-16 A	B3 - Remove Upper Struts inside Tunnel Box			
OHVD		27d	20-Jun-16	21-Jul-16				
Bay B2 (CH338.625 to CH351.8)		27d	20-Jun-16	21-Jul-16				
A5600	B2- Re-erect Scaffolding & Soffit Formwork for OHVD	7d	20-Jun-16	27-Jun-16	B2- Re-erect Scaffolding & Soffit Formwork for OHVD			
A5610	B2- Rebar Fixing to Slab of OHVD	4d	28-Jun-16	02-Jul-16	B2- Rebar Fixing to Slab of OHVD			
A5620	B2- Place Concrete to Slab of OHVD	1d	04-Jul-16	04-Jul-16	B2- Place Concrete to Slab of OHVD			
A5670	B2- 10 Days Curing After Roof Slab Placed	10d	04-Jul-16	14-Jul-16	B2- 10 Days Curing After Roof Slab Placed			
A5630	B2- Erect Internal Wall Formwork	3d	05-Jul-16	07-Jul-16	B2- Erect Internal Wall Formwork			
A5640	B2- Rebar Fixing for Wall	3d	08-Jul-16	11-Jul-16	B2- Rebar Fixing for Wall			
A5650	B2- Erect External Formwork	4d	11-Jul-16	15-Jul-16	B2- Erect External Formwork			
A5660	B2- Place Concrete to Wall From Roof Slab Box Out Opening	1d	15-Jul-16	16-Jul-16	B2- Place Concrete to Wall From Roof Slab Box Out Opening			
A5670A	B2- Remove Scaffold & Soffit Formwork of OHVD	4d	16-Jul-16	21-Jul-16	B2- Remove Scaffold & Soffit Formwork of OHVD			
Bay B3 (CH351.8 to CH368)		24d	20-Jun-16	18-Jul-16				
A5680	B3- Re-erect Scaffolding & Soffit Formwork for OHVD	7d	20-Jun-16	27-Jun-16	B3- Re-erect Scaffolding & Soffit Formwork for OHVD			
A5690	B3- Rebar Fixing to Slab of OHVD	3d	28-Jun-16	30-Jun-16	B3- Rebar Fixing to Slab of OHVD			
A5700	B3- Place Concrete to Slab of OHVD	1d	30-Jun-16	02-Jul-16	B3- Place Concrete to Slab of OHVD			
A5710	B3- Erect Internal Wall Formwork	3d	02-Jul-16	06-Jul-16	B3- Erect Internal Wall Formwork			
A5750	B3- 10 Days Curing After Roof Slab Placed	10d	02-Jul-16	12-Jul-16	B3- 10 Days Curing After Roof Slab Placed			
A5720	B3- Rebar Fixing for Wall	3d	06-Jul-16	09-Jul-16	B3- Rebar Fixing for Wall			
A5730	B3- Erect External Formwork	4d	09-Jul-16	14-Jul-16	B3- Erect External Formwork			
A5740	B3- Place Concrete to Wall of OHVD From Roof Slab Box Out Opening	1d	14-Jul-16	15-Jul-16	B3- Place Concrete to Wall of OHVD From Roof Slab Box Out Opening			
A5750A	B3- Remove Scaffold & Soffit Formwork of OHVD	2d	15-Jul-16	18-Jul-16	B3- Remove Scaffold & Soffit Formwork of OHVD			
Pump House		55d	20-Jun-16	23-Aug-16				
Access Hut Near Ground Level		14d	20-Jun-16	06-Jul-16				
A1670	PS- Internal Wall Formwork	4d	20-Jun-16	23-Jun-16	PS- Internal Wall Formwork			
A1680	PS- Erect Scaffolding + Roof Soffit Fromwork	5d	24-Jun-16	29-Jun-16	PS- Erect Scaffolding + Roof Soffit Fromwork			
A1690	PS- Rebar Fixing	4d	30-Jun-16	05-Jul-16	PS- Rebar Fixing			
A1700	PS- Place Concrete to Wall & Roof Slab	1d	06-Jul-16	06-Jul-16	PS- Place Concrete to Wall & Roof Slab			
Floor Slabs & Partition Walls		41d	07-Jul-16	23-Aug-16				
A1710	PS- Inclide Slab at Pump Pit	12d	07-Jul-16	20-Jul-16	PS- Inclide Slab at Pump Pit			
A1720	PS- Wall at Sump Pit	8d	21-Jul-16	29-Jul-16	PS- Wall at Sump Pit			
A1750	PS- Partition Walls	21d	30-Jul-16	23-Aug-16	PS- Partition Walls			
Egress Passage (EP-01) Inside CCT Structure		7d	20-Jun-16	27-Jun-16				
Utility Trough		7d	20-Jun-16	27-Jun-16				
A2230	EP-01 Bay 1	7d	20-Jun-16	27-Jun-16	EP-01 Bay 1			
A2240	EP-01 Bay 2	7d	20-Jun-16	27-Jun-16	EP-01 Bay 2			
A2250	EP-01 Bay 3	7d	20-Jun-16	27-Jun-16	EP-01 Bay 3			
Backfilling & Struts Removal		35d	24-Feb-16 A	13-Aug-16				
Water Proofing to Wall Stems & Remove Struts		21d	24-Feb-16 A	28-Jul-16				
A5940	Water Proofing to Wall Stem	14d	24-Feb-16 A	12-Jul-16	Water Proofing to Wall Stem			
A5950	Remove Waling & Backfill of Gap Between CCT Wall & Sheet Pile Wall	14d	19-Apr-16 A	20-Jul-16	Remove Waling & Backfill of Gap Between CCT Wall & Sheet Pile Wall			
A5960	Remove Struts Outsidie CCT Structure	14d	16-May-16 A	28-Jul-16	Remove Struts Outsidie CCT Structure			

- Actual Work
- Remaining Work
- Critical Remaining Work
- ◆ Milestone

Date	Revision	Checked	Approved
20-Jun-16	Updated to 20th Jun 2016	DML/WC	

Activity ID	Activity Name	Original Duration	Start	Finish	2016				
					Jun	Jul	Aug	Sep	
Water Proofing to Roof Surface & Backfilling									
A5980	Install Water Proof Membrane to Roof Surface	7d	29-Jul-16	05-Aug-16			█		
A5990	Backfill to Ground Level	7d	06-Aug-16	13-Aug-16			█		
Utility Trough									
A6000	Cast Profile Barriers to Utility Trough	21d	21-Jul-16	15-Aug-16		█			
A6010	Site Clearance & Defect Make Good	14d	15-Aug-16	31-Aug-16			█		
SR8 (Zone A) - Ch 317.500 to Ch 210.000 - U-Structure & Slab (Victoria Park)									
Excavation and Lateral Support									
SR8_2320	Remove Temporary Access to Bowling Green at Bay 3(CH230 to CH240) After Completion of BG & Pavilion	4d	28-Jul-16	01-Aug-16			█		
RC CCT & Backfill Ch317.5000 to Ch240.000									
Structure									
Utility Through									
SR8_2050	Utility Trough	48d	20-Jun-16	15-Aug-16	█				
Backfill & Reinstatement Works Including Removal of Struts									
SR8_1920.20	Remove and/or Pull Sheet Piling Materials	36d	29-Oct-15 A	27-Jul-16	█				
SR8_1920	SR8 U structure - Backfilling & Compaction + Removal of Struts & Sheet Pile	60d	21-Jan-16 A	25-Jul-16	█				
SR8 Structural Slab Ch.240.000 to Ch.210.000									
SR8_2090B	Wall Stern - Bay 3	7d	02-Aug-16	09-Aug-16			█		
Tsing Fung St - RW & Subway Extension & Toe Wall at Hing Fat St									
Ret. Wall & TF Subway Extension (Portion V)									
Retaining Wall RW8C at Tsing Fung Street (Portion V)									
VP_1370A	RW8C - Install Steel Railing on Top of RW8C	14d	20-May-15 A	08-Jul-16	█				
VP_1390	RW8C - Demolish Top Portion of Existing Wall Head and Kerb	18d	09-Jul-16	29-Jul-16		█			
VP_1400	RW8C - Road Formation - Subbase + Kerb + U-shape Channel	48d	30-Jul-16	24-Sep-16			█		
Retaining Wall + Toe Wall at Hing Fat Street									
Subway Extension at Tsing Fung Street (Portion VIII)									
VP_1375.50	TFS Subway extension - install Railing	8d	20-Jun-16	28-Jun-16	█				
RC Works - Toe Wall (RW8E)									
A6900	Excavation & Temporary Works for RW8E	14d	29-Aug-16	13-Sep-16				█	
A6910	Construction of Base Slab of RW8E - 4 Bays	28d	14-Sep-16	19-Oct-16				█	
RC Works - Retaining Wall RW8D									
VP_1540	RW8D - base slab (4 Bays)	28d	09-May-16 A	20-Aug-16	█				
VP_1550	RW8D - wall stem (4 Bay)	36d	22-Aug-16	04-Oct-16			█		
SR8 External Works: Road & Drain, Surfacing, Furnitures, Traffic Signs etc.									
Zone 1 - Within Footpath of Retaining Wall RW8D									
SR8_2010A	Zone 1 - DN 150 Sewer Pipe	14d	20-Jun-16	06-Jul-16	█				
SR8_2100	DS16 Footing & Signage	50d	20-Jun-16	17-Aug-16	█				
SR8_2030	Zone 1 - DN 100 MDPE Water Main - F01 Laying	45d	07-Jul-16	27-Aug-16		█			
SR8_2040	Zone 1 - DN 100 MDPE Water Main Connection by WSD	28d	29-Aug-16	30-Sep-16			█		
SR8_2060	TCSS Ducting (ATC+E&M @2x150UPVC)	14d	29-Aug-16	13-Sep-16			█		
SR8_2110	5m CCTV High Mast Footing	14d	29-Aug-16	13-Sep-16			█		
SR8_2110A	Overheight Detector Footing & Draw Pits at Footpath	14d	14-Sep-16	30-Sep-16			█		
Zone 2 - Subway Extension to New Lay-by									
SR8_2140	Relocate Existing Hoarding for Laying Sewer Pipes & footings	14d	21-Jan-16 A	25-Jun-16	█				

- █ Actual Work
- █ Remaining Work
- █ Critical Remaining Work
- ◆ Milestone

Date	Revision	Checked	Approved
20-Jun-16	Updated to 20th Jun 2016	DML/WC	

Activity ID	Activity Name	Original Duration	Start	Finish	2016			
					Jun	Jul	Aug	Sep
SR8_2140A	Zone 2 - Laying DN150 Sewer & DN225 Storm Drain	21d	31-Jan-16 A	06-Jul-16	Zone 2 - Laying DN150 Sewer & DN225 Storm Drain			
SR8_2150	Construction of VMS6 Footing	14d	27-Jun-16	13-Jul-16	Construction of VMS6 Footing			
SR8_2170	Construction of 15m CCTV Camera High Mast footing at Lay-by	45d	27-Jun-16	18-Aug-16	Construction of 15m CCTV Camera High Mast footing at Lay-by			
SR8_2160	Construction of FVM3H3 footing	14d	14-Jul-16	29-Jul-16	Construction of FVM3H3 footing			
SR8_21800	Zone 2 - Laying DN100 MDPE Water Main - F01	21d	19-Aug-16	12-Sep-16	Zone 2 - Laying DN100 MDPE Water Main - F01			
Zone 3 - Within Zone A & Zone B Area inside Victoria Park/ New Pedestrian Island		35d	15-Aug-16	24-Sep-16				
SR8_2180	Sewer & Storm Drain Pipe Laying	21d	15-Aug-16	07-Sep-16	Sewer & Storm Drain Pipe Laying			
SR8_2210	Laying DN40 Irrigation Main	14d	08-Sep-16	24-Sep-16	Laying DN40 Irrigation Main			
Works in Victoria Park		1471d	21-Mar-13 A	14-Dec-17				
Re-Provisioning Works		133d	27-Apr-16 A	25-Nov-16				
Nursery Compound (NC)		133d	27-Apr-16 A	25-Nov-16				
Temp. Works Design		24d	27-Apr-16 A	01-Jun-16 A				
VP_0270	(01) Temp. Work Design + ICE - submission	24d	27-Apr-16 A	28-May-16 A	Temp. Work Design + ICE - submission			
VP_0280	(01) Temp. Work Design - review and approval by AECOM	24d	30-May-16 A	01-Jun-16 A	Temp. Work Design - review and approval by AECOM			
Structural Submissions		30d	27-Apr-16 A	20-Aug-16				
Method Statement		30d	27-Apr-16 A	20-Aug-16				
VP_6700	(01) Method statement - submission	21d	27-Apr-16 A	19-Jul-16	(01) Method statement - submission			
VP_6710	(01) Method statement - review and approval by AECOM	28d	20-Jul-16	20-Aug-16	(01) Method statement - review and approval by AECOM			
ABWF Submissions		97d	20-Jun-16	14-Oct-16				
Materials		97d	20-Jun-16	14-Oct-16				
VP_6860	Materials submission (Specification and Samples)	21d	20-Jun-16	14-Jul-16	Materials submission (Specification and Samples)			
VP_6870	Materials - ER review and approval	28d	30-Jun-16	02-Aug-16	Materials - ER review and approval			
VP_6880	Issue P.O. / Manufacturing / Fabrication	60d	03-Aug-16	14-Oct-16	Issue P.O. / Manufacturing / Fabrication			
Shop Drawing		60d	03-Aug-16	14-Oct-16				
VP_6820	Shopdrawing submission	60d	03-Aug-16	14-Oct-16	Shopdrawing submission			
Method Statement		60d	03-Aug-16	14-Oct-16				
VP_6720	(01) Method statement - submission	60d	03-Aug-16	14-Oct-16	(01) Method statement - submission			
E&M Works Submission		133d	20-Jun-16	25-Nov-16				
Materials		97d	20-Jun-16	14-Oct-16				
VP_6760	Materials submission (Specification and Samples)	21d	20-Jun-16	14-Jul-16	Materials submission (Specification and Samples)			
VP_6770	Materials - ER review and approval	28d	30-Jun-16	02-Aug-16	Materials - ER review and approval			
VP_6780	Issue P.O. / Manufacturing / Fabrication	60d	03-Aug-16	14-Oct-16	Issue P.O. / Manufacturing / Fabrication			
Shop Drawing		96d	03-Aug-16	25-Nov-16				
VP_6800	Shopdrawing submission	60d	03-Aug-16	14-Oct-16	Shopdrawing submission			
VP_6810	Shopdrawing - ER review and approval	60d	14-Sep-16	25-Nov-16	Shopdrawing - ER review and approval			
Method Statement		96d	03-Aug-16	25-Nov-16				
VP_6750	(01) Method statement - submission	60d	03-Aug-16	14-Oct-16	(01) Method statement - submission			
VP_6740	(01) Method statement - review and approval by AECOM	60d	14-Sep-16	25-Nov-16	(01) Method statement - review and approval by AECOM			
Construction Works to Permanent NC		24d	08-Sep-16	07-Oct-16				
VP_1530	NC - U/G Utilities and foundation works	24d	08-Sep-16	07-Oct-16	NC - U/G Utilities and foundation works			
VP_1520	Start NC Works (SR8 - Area 6, Area 7 & Area 8 Complete)	0d	08-Sep-16		Start NC Works (SR8 - Area 6, Area 7 & Area 8 Complete)			
Establishment Works for Landscape Softworks		902d	23-Feb-15 A	14-Dec-17				
KD11 - Section 7A: Portion XIV & XV (Victoria Park Open Space)		901d	23-Feb-15 A	14-Dec-17				
EW_1000	Establishment Works - for Landscape Softworks and transplanted trees in Portion XIV & XV	901d	23-Feb-15 A	14-Dec-17	Establishment Works - for Landscape Softworks and transplanted trees in Portion XIV & XV			

- Actual Work
- Remaining Work
- Critical Remaining Work
- ◆ Milestone

Date	Revision	Checked	Approved
20-Jun-16	Updated to 20th Jun 2016	DML/WC	

Activity ID	Activity Name	Original Duration	Start	Finish	2016																		
					Jun	Jul	Aug	Sep															
KD12 - Section 7B: Portion VI & VII (Reprov. Bowling Green Area)																							
EW_1010	Establishment Works - for Landscape Softworks and transplanted trees in Portion VI & VII	177d	03-Dec-15 A	17-Jul-16																			
EW_1030	Completion of KD12- Works in Section 7B	0d		17-Jul-16																			
Preservation and Protection of Trees																							
PPT_0000	Preservation and Protection of Existing Trees	1088d	21-Mar-13 A	20-Nov-16																			
Mooring Components Upkeep (CBTS and ATS)																							
MAR_2000	Mooring Upkeep at Portion XIX(19) & XX(20) - ATS (if instructed by Engineer)	1399d	21-Mar-13 A	17-Jan-17																			
MAR_3020	Mooring Upkeep at Portion X(10) & XVI(16) - CBTS	979d	15-May-14 A	21-Jan-17																			
Works for Public Works Regional Laboratory (North Lantau)																							
Maintenance and Upkeep of New PWRL (Portion XVII)																							
PWRL_1050	Maintenance/ Upkeep of New PWRL	1301d	19-Jul-13 A	21-Nov-17																			

- Actual Work
- Remaining Work
- Critical Remaining Work
- Milestone

Date	Revision	Checked	Approved
20-Jun-16	Updated to 20th Jun 2016	DML/WC	

Activity ID	Activity Name	Original Duration	Start	Finish	2016				2017	
					Oct	Nov	Dec	Jan	Feb	
Total		80d	20-Sep-16 A	11-Feb-17						
TS3E - 3 Months Rolling Programme - 2016-10		80d	20-Sep-16 A	11-Feb-17						
West Bound Tunnel (W/B)		71d	16-Oct-16 A	30-Jan-17						
Diaphragm Wall Remedial Works & Reactive Cementitious Coating Works		44d	16-Oct-16 A	24-Dec-16						
A1020	PU Injection to Sto Water Leakage at CJ Location	40d	16-Oct-16 A	24-Nov-16						
A1030	Patching Up Works	20d	24-Nov-16	14-Dec-16						
A1040	Apply Reactive Cementitious Coating	10d	14-Dec-16	24-Dec-16						
Outstanding Reinforced Concrete Works		86d	06-Nov-16	30-Jan-17						
Stitching of TS2 & TS3E		48d	06-Nov-16	23-Dec-16						
A1050	TS2/TS3E - Base Slab (Part 1 - 6.5 m Length)	8d	06-Nov-16*	13-Nov-16						
A1060	TS2/TS3E - Base Slab (Part 2 - 10.5 m Length)	8d	14-Nov-16	21-Nov-16						
A1070	TS2/TS3E - Wall	8d	22-Nov-16	29-Nov-16						
A1080	TS2/TS3E - OHVD	10d	30-Nov-16	09-Dec-16						
A1090	TS2/TS3E - Roof Slab	14d	10-Dec-16	23-Dec-16						
Profile Barrier & Maintenance Walkway		70d	22-Nov-16	30-Jan-17						
A1100	Profile Barrier 60m	15d	22-Nov-16	06-Dec-16						
A1110	Maintenance Walkway 70m	15d	07-Dec-16	21-Dec-16						
A1120	Making Half Round Channel for the Cable Trough (2 x 90m)	12d	22-Dec-16	02-Jan-17						
A1130	Install Precast Concrete Covers on the Cable Trough (2 x 90m)	8d	23-Jan-17	30-Jan-17						
Outstanding Soffit of CP32		21d	19-Nov-16	09-Dec-16						
A1140	Erection of CP32 Falsework	8d	19-Nov-16	26-Nov-16						
A1150	Reinforcement Bar Fixing & Concreting	8d	02-Dec-16	09-Dec-16						
Remaining Works		36d	24-Dec-16	28-Jan-17						
A1160	PU Injection grout for Tunnel Structure	20d	24-Dec-16	12-Jan-17						
A1170	General Cleansing Works for Tunnel	10d	13-Jan-17	22-Jan-17						
A1180	Joint Site Walk	5d	23-Jan-17	27-Jan-17						
A1190	Hand Over Date	1d	28-Jan-17	28-Jan-17						
East Bound Tunnel (E/B)		80d	20-Sep-16 A	11-Feb-17						
A1200	Bulkhead Removal of TS2/TS3E (Completed)	27d	20-Sep-16 A	15-Oct-16 A						
Diaphragm Wall Remedial Works & Reactive Cementitious Coating Works		104d	05-Oct-16 A	11-Feb-17						
A1210	Hand Trimming & Water Jet Cleansing of Loose Material on Diaphragm Wall Surface	70d	05-Oct-16 A	13-Dec-16						
A1220	PU Injection to Sto Water Leakage at CJ Location	40d	14-Dec-16	22-Jan-17						
A1230	Patching Up Works	20d	23-Jan-17	11-Feb-17						
Outstanding Reinforced Concrete Works		74d	16-Nov-16	28-Jan-17						
Stitching of TS2 & TS3E		48d	16-Nov-16	02-Jan-17						
A1250	TS2/TS3E - Base Slab (Part 1 - 6.5 m Length)	8d	16-Nov-16*	23-Nov-16						
A1260	TS2/TS3E - Base Slab (Part 2 - 10.5 m Length)	8d	24-Nov-16	01-Dec-16						
A1270	TS2/TS3E - Wall	8d	02-Dec-16	09-Dec-16						
A1280	TS2/TS3E - OHVD	10d	10-Dec-16	19-Dec-16						
A1290	TS2/TS3E - Roof Slab	14d	20-Dec-16	02-Jan-17						
Profile Barrier & Maintenance Walkway		58d	02-Dec-16	28-Jan-17						
A1310	Profile Barrier 120m	25d	02-Dec-16	26-Dec-16						
A1320	Maintenance Walkway 80m	18d	27-Dec-16	13-Jan-17						

- █ Actual Work
- █ Remaining Work
- █ Critical Remaining Work
- ◆ Milestone

Date	Revision	Checked	Approved
20-Oct-16	Updated to 20th Oct 2016	DML/WC	

Activity ID	Activity Name	Original Duration	Start	Finish	2016												2017	
					Oct	Nov	Dec	Jan	Feb									
A1330	Making Half Round Channel for the Cable Trough (2 x 90m)	15d	14-Jan-17	28-Jan-17														
Remaining Works		30d	03-Jan-17	01-Feb-17														
A1340	PU Injection grout for Tunnel Structure	20d	03-Jan-17	22-Jan-17														
A1350	General Cleansing Works for Tunnel	10d	23-Jan-17	01-Feb-17														



中國建築工程(香港)有限公司
CHINA STATE CONSTRUCTION ENGINEERING (HONG KONG) LTD.

- Actual Work
- Remaining Work
- Critical Remaining Work
- ◆ Milestone

Page 2 of 2

Contract No. HY/2010/08: Central - Wanchai Bypass Tunnel +(Slip Road 8 Section) - 3 Months Rolling Programme

Date	Revision	Checked	Approved
20-Oct-16	Updated to 20th Oct 2016	DMLWC	

Activity ID	Activity Name	Original Duration	Start	Finish	2016				2017	
					Oct	Nov	Dec	Jan	Feb	
Total		139d	21-Aug-16 A	05-Jan-17						
TS3W - 3 Months Rolling Programme - 2016-10		139d	21-Aug-16 A	05-Jan-17						
CCT		139d	21-Aug-16 A	05-Jan-17						
Northern & Southern Tunnel		108d	21-Aug-16 A	05-Jan-17						
Zone E1		70d	21-Aug-16 A	21-Nov-16						
Bay 1		70d	21-Aug-16 A	21-Nov-16						
TS3W_2100	Bay 1 - Break Trough Bulkhead Bay 1N & 1S	21d	20-Sep-16 A	20-Nov-16						
TS3W_2090	Bay 1 - Spray Type Waterproofing, Protection Board & Backfilling	10d	31-Oct-16	09-Nov-16						
Bay N1		63d	21-Aug-16 A	21-Nov-16						
TS3W_2130	Bay N1 - Utility Trough	4d	21-Aug-16 A	21-Nov-16						
TS3W_2150	Bay N1 - Roof Slab	10d	24-Sep-16 A	25-Oct-16 A						
Bay S1		26d	21-Aug-16 A	03-Nov-16						
TS3W_2180	Bay S1 - Utility Trough	4d	21-Aug-16 A	03-Nov-16						
TS3W_2200	Bay S1 - Roof Slab	10d	23-Sep-16 A	11-Oct-16 A						
Bay 2		51d	21-Aug-16 A	09-Nov-16						
TS3W_2230	Bay 2 - Spray Type Waterproofing, Protection Board & Backfilling	10d	31-Oct-16	09-Nov-16						
Bay N2		51d	21-Aug-16 A	06-Nov-16						
TS3W_2260	Bay N2 - Utility Trough	4d	21-Aug-16 A	06-Nov-16						
TS3W_2280	Bay N2 - Roof Slab	10d	30-Aug-16 A	31-Oct-16 A						
TS3W_2270	Bay N2 - OHVD Slab & Hanger Wall	11d	01-Sep-16 A	09-Oct-16 A						
Bay S2		51d	21-Aug-16 A	06-Nov-16						
TS3W_2310	Bay S2 - Utility Trough	4d	21-Aug-16 A	06-Nov-16						
TS3W_2330	Bay S2 - Roof Slab	10d	25-Aug-16 A	28-Oct-16 A						
TS3W_2320	Bay S2 - OHVD Slab & Hanger Wall	11d	29-Aug-16 A	03-Oct-16 A						
Zone E2		55d	21-Aug-16 A	25-Nov-16						
Bay 3		55d	21-Aug-16 A	25-Nov-16						
TS3W_2360	Bay 3 - Spray Type Waterproofing, Protection Board & Backfilling	10d	31-Oct-16	09-Nov-16						
Bay N3		55d	21-Aug-16 A	25-Nov-16						
TS3W_2390	Bay N3 - Utility Trough	4d	21-Aug-16 A	03-Nov-16						
TS3W_2410	Bay N3 - Roof Slab	10d	13-Sep-16 A	25-Nov-16						
TS3W_2400	Bay N3 - OHVD Slab & Hanger Wall	11d	20-Sep-16 A	16-Oct-16 A						
Bay S3		53d	23-Aug-16 A	22-Nov-16						
TS3W_2440	Bay S3 - Utility Trough	4d	23-Aug-16 A	08-Nov-16						
TS3W_2450	Bay S3 - OHVD Slab & Hanger Wall	11d	13-Sep-16 A	14-Oct-16 A						
TS3W_2460	Bay S3 - Roof Slab	10d	28-Sep-16 A	22-Nov-16						
Zone W1		101d	25-Aug-16 A	05-Jan-17						
Bay 4		41d	25-Aug-16 A	19-Nov-16						
TS3W_2490	Bay 4 - Spray Type Waterproofing, Protection Board & Backfilling	10d	31-Oct-16	09-Nov-16						
Bay N4		38d	25-Aug-16 A	18-Nov-16						
TS3W_2620	Bay N4 - Utility Trough	4d	25-Aug-16 A	06-Nov-16						
TS3W_2610	Bay N4 - Wall 5	7d	22-Sep-16 A	03-Oct-16 A						
TS3W_2640	Bay N4 - Roof Slab	10d	26-Sep-16 A	18-Nov-16						
TS3W_2630	Bay N4 - OHVD Slab & Hanger Wall	11d	15-Oct-16 A	19-Oct-16 A						

- Actual Work
- Remaining Work
- Critical Remaining Work
- ◆ Milestone

Date	Revision	Checked	Approved
20-Oct-16	Updated to 20th Oct 2016	DML/WC	

Activity ID	Activity Name	Original Duration	Start	Finish	2016					2017	
					Oct	Nov	Dec	Jan	Feb		
Bay S4											
TS3W_2690	Bay S4 - Utility Trough	4d	25-Aug-16 A	06-Nov-16	Bay S4 - Utility Trough						
TS3W_2700	Bay S4 - Roof Slab	10d	13-Sep-16 A	19-Nov-16	Bay S4 - Roof Slab						
TS3W_2710	Bay S4 - OHVD Slab & Hanger Wall	11d	15-Sep-16 A	20-Oct-16 A	Bay S4 - OHVD Slab & Hanger Wall						
TS3W_2660	Bay S4 - Wall 6	7d	21-Sep-16 A	30-Sep-16 A							
Bay 5											
TS3W_2740	Bay 5 - Spray Type Waterproofing, Protection Board & Backfilling	10d	31-Oct-16	09-Nov-16	Bay 5 - Spray Type Waterproofing, Protection Board & Backfilling						
Bay N5											
TS3W_2760	Bay N5 - Utility Trough	4d	27-Aug-16 A	06-Nov-16	Bay N5 - Utility Trough						
TS3W_2770	Bay N5 - Wall 5	7d	05-Oct-16 A	09-Oct-16 A	Bay N5 - Wall 5						
TS3W_2780	Bay N5 - Roof Slab	10d	05-Oct-16 A	21-Nov-16	Bay N5 - Roof Slab						
TS3W_2790	Bay N5 - OHVD Slab & Hanger Wall	11d	23-Oct-16 A	26-Oct-16 A	Bay N5 - OHVD Slab & Hanger Wall						
Bay S5											
TS3W_2810	Bay S5 - Utility Trough	4d	27-Aug-16 A	03-Nov-16	Bay S5 - Utility Trough						
TS3W_2820	Bay S5 - Wall 6	7d	23-Sep-16 A	07-Oct-16 A							
TS3W_2830	Bay S5 - OHVD Slab & Hanger Wall	11d	04-Nov-16	14-Nov-16	Bay S5 - OHVD Slab & Hanger Wall						
TS3W_2840	Bay S5 - Roof Slab	10d	15-Nov-16	24-Nov-16	Bay S5 - Roof Slab						
Bay 6											
TS3W_2860	Bay 6 - Concrete Strut & Remove SL 6,7,8	7d	10-Sep-16 A	04-Oct-16 A	Cut & Remove SL 6,7,8						
TS3W_2870	Bay 6 - Spray Type Waterproofing, Protection Board & Backfilling	10d	07-Nov-16	16-Nov-16	Bay 6 - Spray Type Waterproofing, Protection Board & Backfilling						
Bay N6											
TS3W_2890	Bay N6 - Utility Trough	4d	06-Sep-16 A	13-Nov-16	Bay N6 - Utility Trough						
TS3W_2900	Bay N6 - Wall 5	7d	10-Oct-16 A	06-Nov-16	Bay N6 - Wall 5						
TS3W_2910	Bay N6 - OHVD Slab & Hanger Wall	11d	24-Nov-16	04-Dec-16	Bay N6 - OHVD Slab & Hanger Wall						
TS3W_2920	Bay N6 - Roof Slab	10d	05-Dec-16	14-Dec-16	Bay N6 - Roof Slab						
Bay S6											
TS3W_2940	Bay S6 - Utility Trough	4d	29-Aug-16 A	13-Nov-16	Bay S6 - Utility Trough						
TS3W_2950	Bay S6 - Wall 6	7d	09-Oct-16 A	06-Nov-16	Bay S6 - Wall 6						
TS3W_2960	Bay S6 - OHVD Slab & Hanger Wall	11d	27-Nov-16	07-Dec-16	Bay S6 - OHVD Slab & Hanger Wall						
TS3W_2970	Bay S6 - Roof Slab	10d	08-Dec-16	17-Dec-16	Bay S6 - Roof Slab						
Bay SR6											
SR8_S_1250	SR8 - Bay SR6 Base Slab	7d	17-Nov-16	23-Nov-16	SR8 - Bay SR6 Base Slab						
SR8_S_1260	SR8 - Bay SR6 Wall	7d	18-Dec-16	24-Dec-16	SR8 - Bay SR6 Wall						
SR8_S_1270	SR8 - Utility Trough	4d	18-Dec-16	21-Dec-16	SR8 - Utility Trough						
SR8_S_1280	SR8 - Bay SR6 OHVD Slab & Hanger Wall	8d	22-Dec-16	29-Dec-16	SR8 - Bay SR6 OHVD Slab & Hanger Wall						
SR8_S_1290	SR8 - Bay SR6 Roof Slab	7d	30-Dec-16	05-Jan-17	SR8 - Bay SR6 Roof Slab						
Zone W2											
Bay 7											
TS3W_3230	Bay 7 - Concrete Strut & Remove SL 6,7,8	7d	06-Oct-16 A	07-Nov-16	Bay 7 - Concrete Strut & Remove SL 6,7,8						
TS3W_3240	Bay 7 - Spray Type Waterproofing, Protection Board & Backfilling	10d	15-Nov-16	24-Nov-16	Bay 7 - Spray Type Waterproofing, Protection Board & Backfilling						
Bay N7											
TS3W_3270	Bay N7 - Utility Trough	4d	25-Aug-16 A	18-Nov-16	Bay N7 - Utility Trough						
TS3W_3250	Bay N7 - Base Slab	7d	26-Aug-16 A	04-Oct-16 A							
TS3W_3260	Bay N7 - Wall 5 & 1	7d	08-Nov-16	14-Nov-16	Bay N7 - Wall 5 & 1						

Activity ID	Activity Name	Original Duration	Start	Finish	2016				2017	
					Oct	Nov	Dec	Jan	Feb	
TS3W_3280	Bay N7 - OHVD	11d	19-Nov-16	29-Nov-16						
TS3W_3290	Bay N7 - Roof Slab	10d	30-Nov-16	09-Dec-16						
Bay S7		36d	26-Sep-16 A	09-Dec-16						
TS3W_3320	Bay S7 - Utility Trough	4d	26-Sep-16 A	18-Nov-16						
TS3W_3310	Bay S7 - Wall 6 & 2	7d	08-Nov-16	14-Nov-16						
TS3W_3330	Bay S7 - OHVD	11d	19-Nov-16	29-Nov-16						
TS3W_3340	Bay S7 - Roof Slab	10d	30-Nov-16	09-Dec-16						
Bay SR7		40d	31-Oct-16	09-Dec-16						
SR8_S_1300	SR8 - Bay SR7 - Base Slab	7d	31-Oct-16	06-Nov-16						
SR8_S_1310	SR8 - Bay SR7 - Wall	7d	08-Nov-16	14-Nov-16						
SR8_S_1320	SR8 - Bay SR7 - Utility Trough	4d	15-Nov-16	18-Nov-16						
SR8_S_1330	SR8 - Bay SR7 - OHVD	11d	19-Nov-16	29-Nov-16						
SR8_S_1340	SR8 - Bay SR7 - Roof Slab	10d	30-Nov-16	09-Dec-16						
Bay 8		74d	21-Sep-16 A	01-Jan-17						
TS3W_3400	Bay 8 - Waterproofing (Include SR8 - Bay SR8)	3d	24-Sep-16 A	05-Oct-16 A						
TS3W_3410	Bay 8 - Concrete Strut & Remove SL 6,7,8	7d	22-Oct-16 A	13-Nov-16						
TS3W_3430	Bay 8 - Break Trough Bulkhead Bay 8N, 8S & SR8	21d	26-Oct-16 A	11-Dec-16						
TS3W_3420	Bay 8 - Spray Type Waterproofing, Protection Board & Backfilling	10d	21-Nov-16	30-Nov-16						
Bay N8		74d	22-Sep-16 A	01-Jan-17						
TS3W_3440	Bay N8 - Base Slab	7d	22-Sep-16 A	15-Oct-16 A						
TS3W_3460	Bay N8 - Utility Trough	4d	18-Oct-16 A	24-Nov-16						
TS3W_3450	Bay N8 - Wall 5 & 1	7d	14-Nov-16	20-Nov-16						
TS3W_3470	Bay N8 - OHVD	11d	12-Dec-16	22-Dec-16						
TS3W_3480	Bay N8 - Roof Slab	10d	23-Dec-16	01-Jan-17						
Bay S8		74d	21-Sep-16 A	01-Jan-17						
TS3W_3490	Bay S8 - Base Slab	7d	21-Sep-16 A	12-Oct-16 A						
TS3W_3600	Bay S8 - Utility Trough	4d	24-Oct-16 A	24-Nov-16						
TS3W_3500	Bay S8 - Wall 6 & 2	7d	14-Nov-16	20-Nov-16						
SR8_S_1370	SR8 - Utility Trough	4d	21-Nov-16	24-Nov-16						
TS3W_3610	Bay S8 - OHVD	11d	12-Dec-16	22-Dec-16						
TS3W_3620	Bay S8 - Roof Slab	10d	23-Dec-16	01-Jan-17						
Bay SR8		63d	31-Oct-16	01-Jan-17						
SR8_S_1350	SR8 - Bay SR8 - Base Slab	7d	31-Oct-16	06-Nov-16						
SR8_S_1360	SR8 - Bay SR8 - Wall	7d	14-Nov-16	20-Nov-16						
SR8_S_1380	SR8 - Bay SR8 - OHVD	11d	12-Dec-16	22-Dec-16						
SR8_S_1390	SR8 - Bay SR8 - Roof Slab	10d	23-Dec-16	01-Jan-17						
Egress Passage (EP-02) & Cross Passage (CP31)		55d	22-Aug-16 A	11-Dec-16						
TS3W_3680	CP-31 + EP-02 Stair Case Structure at Bay N2 & S2	21d	22-Aug-16 A	20-Nov-16						
TS3W_3690	EP-02 Corridor on Top of S2 & S3 Roof	21d	21-Nov-16	11-Dec-16						
Egress Passage (EP-03) & Cross Passage (CP-30)		35d	22-Oct-16 A	23-Nov-16						
TS3W_3700	CP-30 in Bay 5	7d	22-Oct-16 A	19-Nov-16						
TS3W_3710	Waterproofing to CP-30 & Backfilling up to SR8 BaySR6 Base Slab Bottom	4d	20-Nov-16	23-Nov-16						
SR8 Tunnel		114d	21-Aug-16 A	11-Dec-16						
Waterproofing to Base Slab		10d	21-Aug-16 A	09-Nov-16						

Activity ID	Activity Name	Original Duration	Start	Finish	2016				2017		
					Oct	Nov	Dec	Jan	Feb		
SR8_S_1000	Waterproof to Base Slab - Bay SR1 to SR3A	10d	21-Aug-16 A	09-Nov-16	Waterproof to Base Slab - Bay SR1 to SR3A						
Bay SR1		25d	31-Oct-16	24-Nov-16							
SR8_S_1020	SR8 - Bay SR1 - Utility Trough	4d	31-Oct-16	03-Nov-16	SR8 - Bay SR1 - Utility Trough						
SR8_S_1030	SR8 - Bay SR1 - OHVD Slab & Hanger Wall	11d	04-Nov-16	14-Nov-16	SR8 - Bay SR1 - OHVD Slab & Hanger Wall						
SR8_S_1040	SR8 - Bay SR1 - Roof Slab	10d	15-Nov-16	24-Nov-16	SR8 - Bay SR1 - Roof Slab						
Bay SR2		32d	31-Oct-16	01-Dec-16							
SR8_S_1050	SR8 - Bay SR2 - Base Slab	7d	31-Oct-16	06-Nov-16	SR8 - Bay SR2 - Base Slab						
SR8_S_1060	SR8 - Bay SR2 - Utility Trough	4d	07-Nov-16	10-Nov-16	SR8 - Bay SR2 - Utility Trough						
SR8_S_1070	SR8 - Bay SR2 - OHVD Slab & Hanger Wall	11d	11-Nov-16	21-Nov-16	SR8 - Bay SR2 - OHVD Slab & Hanger Wall						
SR8_S_1080	SR8 - Bay SR2 - Roof Slab	10d	22-Nov-16	01-Dec-16	SR8 - Bay SR2 - Roof Slab						
Bay SR3 (Part Within Zone E2)		42d	31-Oct-16	11-Dec-16							
SR8_S_1090	Breaking to Cut Off Level of Temporary Diaphragm Wall	3d	31-Oct-16	02-Nov-16	Breaking to Cut Off Level of Temporary Diaphragm Wall						
SR8_S_1100	SR8 - Bay SR3 - Base Slab	7d	03-Nov-16	09-Nov-16	SR8 - Bay SR3 - Base Slab						
SR8_S_1110	SR8 - Bay SR3 - Wall	7d	10-Nov-16	16-Nov-16	SR8 - Bay SR3 - Wall						
SR8_S_1120	SR8 - Bay SR3 - Utility Trough	4d	17-Nov-16	20-Nov-16	SR8 - Bay SR3 - Utility Trough						
SR8_S_1130	SR8 - Bay SR3 - OHVD Slab & Hanger Wall	11d	21-Nov-16	01-Dec-16	SR8 - Bay SR3 - OHVD Slab & Hanger Wall						
SR8_S_1140	SR8 - Bay SR3 - Roof Slab	10d	02-Dec-16	11-Dec-16	SR8 - Bay SR3 - Roof Slab						
Bay SR4 (Within Zone W1)		42d	31-Oct-16	11-Dec-16							
SR8_S_1150	SR8 - Bay SR4 - Base Slab	10d	31-Oct-16	09-Nov-16	SR8 - Bay SR4 - Base Slab						
SR8_S_1160	SR8 - Bay SR4 - Wall	7d	10-Nov-16	16-Nov-16	SR8 - Bay SR4 - Wall						
SR8_S_1170	SR8 - Bay SR4 - Utility Trough	4d	17-Nov-16	20-Nov-16	SR8 - Bay SR4 - Utility Trough						
SR8_S_1180	SR8 - Bay SR4 - OHVD Slab & Hanger Wall	11d	21-Nov-16	01-Dec-16	SR8 - Bay SR4 - OHVD Slab & Hanger Wall						
SR8_S_1190	SR8 - Bay SR4 - Roof Slab	10d	02-Dec-16	11-Dec-16	SR8 - Bay SR4 - Roof Slab						
Bay SR5 (Within Zone W1)		42d	31-Oct-16	11-Dec-16							
SR8_S_1200	SR8 - Bay SR5 - Base Slab	10d	31-Oct-16	09-Nov-16	SR8 - Bay SR5 - Base Slab						
SR8_S_1210	SR8 - Bay SR5 - Wall	7d	10-Nov-16	16-Nov-16	SR8 - Bay SR5 - Wall						
SR8_S_1220	SR8 - Bay SR5 - Utility Trough	4d	17-Nov-16	20-Nov-16	SR8 - Bay SR5 - Utility Trough						
SR8_S_1230	SR8 - Bay SR5 - OHVD Slab & Hanger Wall	11d	21-Nov-16	01-Dec-16	SR8 - Bay SR5 - OHVD Slab & Hanger Wall						
SR8_S_1240	SR8 - Bay SR5 - Roof Slab	10d	02-Dec-16	11-Dec-16	SR8 - Bay SR5 - Roof Slab						
Waterproofing to Roof Slab		4d	31-Oct-16	03-Nov-16							
SR8_S_1410	Waterproof to Roof Slab - Bay SR2	4d	31-Oct-16	03-Nov-16	Waterproof to Roof Slab - Bay SR2						
SR8_S_1420	Waterproof to Roof Slab - Bay SR3	4d	31-Oct-16	03-Nov-16	Waterproof to Roof Slab - Bay SR3						
SR8_S_1430	Waterproof to Roof Slab - Bay SR4	4d	31-Oct-16	03-Nov-16	Waterproof to Roof Slab - Bay SR4						
SR8_S_1440	Waterproof to Roof Slab - Bay SR5	4d	31-Oct-16	03-Nov-16	Waterproof to Roof Slab - Bay SR5						
SR8_S_1450	Waterproof to Roof Slab - Bay SR6	4d	31-Oct-16	03-Nov-16	Waterproof to Roof Slab - Bay SR6						
SR8_S_1460	Waterproof to Roof Slab - Bay SR7	4d	31-Oct-16	03-Nov-16	Waterproof to Roof Slab - Bay SR7						
SR8_S_1470	Waterproof to Roof Slab - Bay SR8	4d	31-Oct-16	03-Nov-16	Waterproof to Roof Slab - Bay SR8						
SR8_S_1400	Waterproof to Roof Slab - Bay SR1	4d	31-Oct-16	03-Nov-16	Waterproof to Roof Slab - Bay SR1						